

MECHANICAL REINFORCING BAR SPLICING SYSTEM

**presCOUP** Coupler

**PROPERTIES**

- Meets or exceeds the requirements of major international building codes
- A wide range of international rebar grades and deformation patterns can be used
- No reduction of the cross section of the bar.
- Installs easily and fast
- No need to end shop-preparing
- Available in sizes 12 mm - 40 mm
- Allows simple visual inspection



Prescoup cold-swaged Couplers are designed to splice bars in situ. A hydraulic swaging press with special dies deform the sleeve around the ends of the bars to be spliced. This method creates a mechanical connection between reinforcing bars. Different sizes of reinforcing bars can be spliced with this system. This mechanical splice can also be used for joining reinforcing bars to structural steel components. Portable and bench type cold swaging press machines are provided by Regbar Construction. Typical applications include splicing tunnel eye bars, splicing of the column bars (or shearwalls), splicing of the beam bars, future extensions and segmental pours of concrete, repair applications.



Prescoup couplers are designed to meet or exceed major international building codes and Department of Transportation requirements, including:

AASHTO	ACI 349	IBC Type 1 (125% Specified Yield)	NF A 35-020-1
ABNT NBR 8548:1984	ACI 359	IBC Type 2 (Specified Ultimate)	NF EN 1992-1-1
ACI 318 Type 1 (125% Specified Yield)	AS3600	ISO 15835	Turkish Seismic Code 2018
ACI 318 Type 2 (Specified Ultimate)	Eurocode 2	NEN EN 1992-1-1	US Army Corps of Engineers

**HEADQUARTERS**

Caferağa Mah. Albay Faik Sözdener Cad.  
No:7/23 Kadıköy- İstanbul / TURKEY  
Phone : +90 216 405 21 55 / PBX  
info@regbar.com

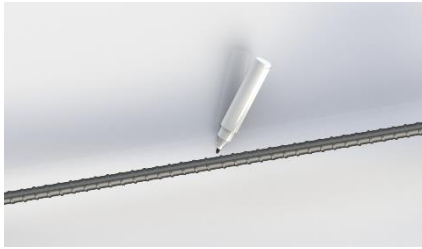
**PLANT**

Sanayi Mah. İzmit Sanayi Sitesi  
13. Cadde 318 Blok Apt. No:318/132  
No:9 İzmit-Kocaeli / TURKEY  
Mobile: +90 541 932 3751

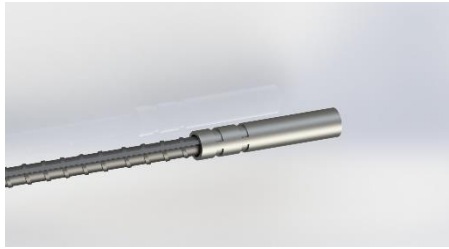
**RUSSIA BRANCH:**

Lesnaya Plaza 4, 4th, Lesnoy Pereulok  
No:24/8125047 Moscow / RUSSIA  
W: +7 (495) 641 37 64

## SIMPLE INSTALLATION



1. Mark the rebar with a marker pen half of coupler length from the end.



2. Place the rebar in sleeve and swage the sleeve with press.



3. Repeat step 2 with the corresponding reinforcing bar to be spliced.

## SIZES AND DIMENSIONS

Product Code	Bar Sizes			Outside Diameter (*)		Length		Unit Weight (*)		Press Pressure		Number of Grooves
	Metric [mm]	US	Canada	[mm]	["]	[mm]	["]	[kg]	[lb]	[MPa]	[ksi]	
PRSCP12	12	#4	10M	24	15/16	109	4-19/64	0.3	0.67	40	5.9	4
PRSCP14	14	-	-	26	1-1/32	115	4-17/32	0.35	0.78	40	5.9	4
PRSCP16	16	#5	15M	30	1-3/16	130	5-1/8	0.52	1.15	40	5.9	4
PRSCP18	18	-	-	34	1-11/32	130	5-1/8	0.67	1.48	40	5.9	4
PRSCP20	20	#6	20M	36	1-27/64	150	5-29/32	0.83	1.83	40	5.9	4
PRSCP22	22	#7	-	40	1-37/64	170	6-11/16	1.17	2.58	44	6.4	6
PRSCP26	26	#8	25M	45	1-49/64	190	7-31/64	1.59	3.51	53	7.7	6
PRSCP28	28	#9	30M	50	1-31/32	210	8-17/64	2.23	4.92	55	8	8
PRSCP30	30	-	-	57	2-1/4	240	9-29/64	3.48	7.68	57	8.3	10
PRSCP32	32	#10	-	57	2-1/4	240	9-29/64	3.48	7.28	57	8.3	10
PRSCP36	36	#11	35M	63	2-31/64	270	10-5/8	4.45	9.82	48	7	12
PRSCP40	40	-	-	70	2-3/4	300	11-13/16	6.11	13.48	52	7.6	14

(\*) Diameters and weights may vary by country.

### NOTES

- Dimensions shown in chart are typical.
- Check the press pressure before swaging.
- Number of grooves indicates the total press count of two sides of coupler.
- Do not press more than the number of grooves specified in the chart which will result in cracks in sleeve.
- Refer to the complete product installation instructions before starting the installation.

Regbar Construction  
Reinforcing Bar  
Splicing System  
<http://tiny.cc/regbar>



### HEADQUARTERS

Caferağa Mah. Albay Faik Sözdener Cad.  
No:7/23 Kadıköy- İstanbul / TURKEY  
Phone : +90 216 405 21 55 / PBX  
info@regbar.com

### PLANT

Sanayi Mah. İzmit Sanayi Sitesi  
13. Cadde 318 Blok Apt. No:318/132  
No:9 İzmit-Kocaeli / TURKEY  
Mobile: +90 541 932 3751

### RUSSIA BRANCH:

Lesnaya Plaza 4, 4th, Lesnoy Pereulok  
No:24/8125047 Moscow / RUSSIA  
W: +7 (495) 641 37 64