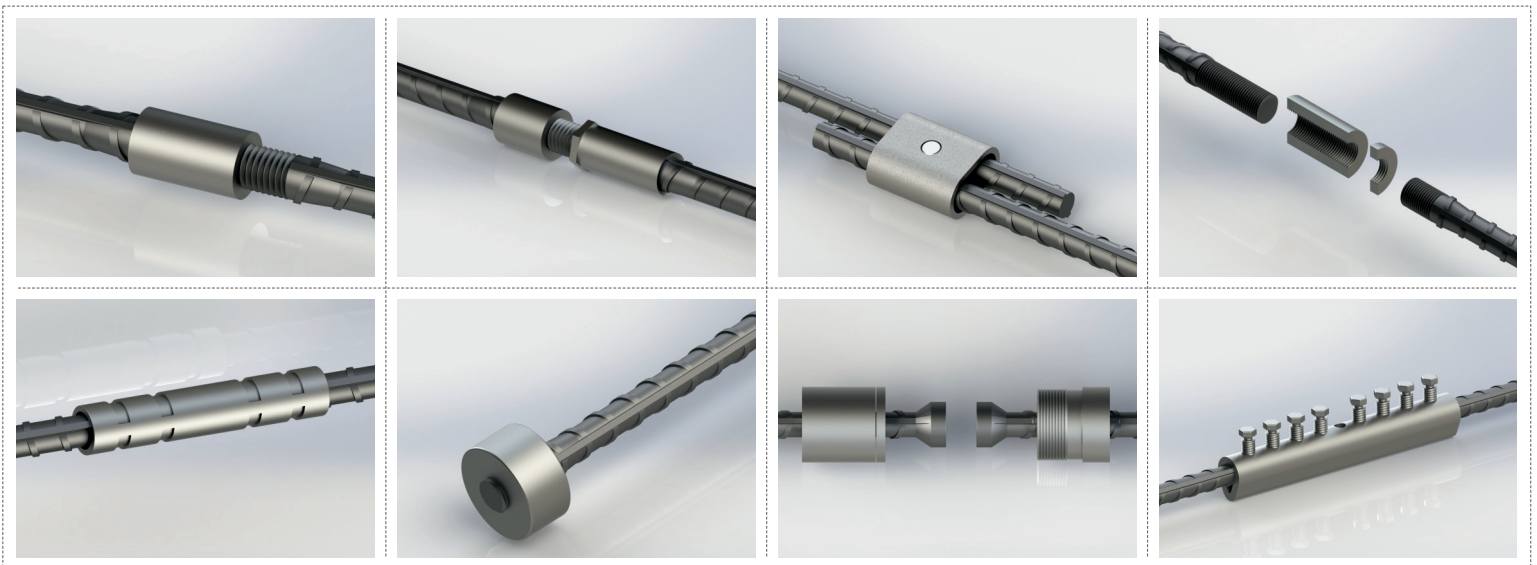


# MECHANICAL REBAR COUPLER



**REGBAR**  
CONSTRUCTION TECHNOLOGY SOLUTIONS

**barCOUP**

# MECHANICAL REINFORCING BAR SPLICING SYSTEM

## barCOUP Coupler

### Properties

- ▶ Meets or exceeds the requirements of major international building codes
- ▶ A wide range of international rebar grades and deformation patterns can be used
- ▶ Upset Parallel Thread System eliminates losing of connection strength via slipping
- ▶ Installs easily and fast
- ▶ Slim design reduces concrete cover
- ▶ Available in sizes 12 mm - 40 mm
- ▶ Allows simple visual inspection



Barcoup Couplers are designed to splice the same diameter bars where at least one bar can be rotated and moved freely in its axial direction. The couplers are machined to have parallel threads inside which create a mechanical connection of two corresponding reinforcing steel.

Typical applications include splicing of the column bars (or shearwalls), splicing of the beam bars, future extensions and segmental pours of concrete.



Barcoup couplers are designed to meet or exceed major international building codes and Department of Transportation requirements, including:

AASHTO	ACI 349	IBC Type 1 (125% Specified Yield)	NF A 35-020-1
ABNT NBR 8548:1984	ACI 359	IBC Type 2 (Specified Ultimate)	NF EN 1992-1-1
ACI 318 Type 1 (125% Specified Yield)	AS3600	ISO 15835	Turkish Seismic Code 2018
ACI 318 Type 2 (Specified Ultimate)	Eurocode 2	GOST 34278	US Army Corps of Engineers

#### HEADQUARTERS

Caferağa Mah. Albay Faik Sözdener Cad.  
No:7/23 Kadıköy - İstanbul - TURKEY  
**Phone:** +90 216 405 21 55 pbx  
**E-mail:** info@regbar.com

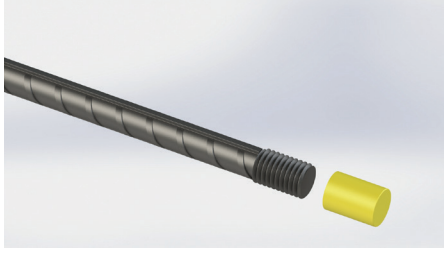
#### PLANT

Sanayi Mah. İzmit Sanayi Sitesi  
13. Cadde 318 Blok Apt. No: 318/132  
No:9 İzmit - Kocaeli - TURKEY  
**Mobile:** +90 541 932 37 51

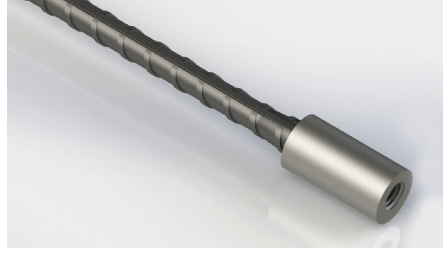
#### RUSSIA BRANCH

Lesnaya Plaza 4, 4th Lesnoy  
Pereulok No: 24/8 125047  
Moscow / RUSSIA

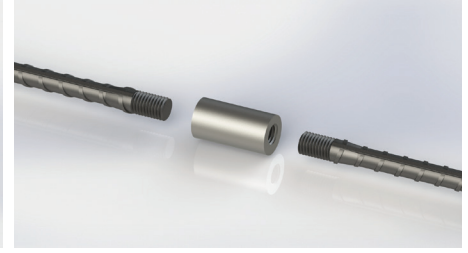
## Simple Installation



**1.** Remove the protecting cap from the rebar.



**2.** Screw the coupler on the threaded bar.



**3.** Align the corresponding rebar. Rotate the rebar to the middle of coupler.

Product Code	Bar Sizes			Outside Diameter (*)		Length		Unit Weight (*)	
	Metric [mm]	US	Canada	[mm]	[ " ]	[mm]	[ " ]	[kg]	[lb]
<b>BRCP12</b>	12	#4	10M	19	3/4	38	1-1/2	0.05	0.12
<b>BRCP14</b>	14	-	-	24	15/16	42	1-21/32	0.09	0.2
<b>BRCP16</b>	16	#5	15M	29	1-9/64	47	1-27/32	0.14	0.31
<b>BRCP18</b>	18	-	-	34	1-11/32	50	1-31/32	0.21	0.47
<b>BRCP20</b>	20	#6	20M	34	1-11/32	54	2-1/8	0.22	0.49
<b>BRCP22</b>	22	#7	-	39	1-17/32	58	2-9/32	0.28	0.62
<b>BRCP26</b>	26	#8	25M	39	1-17/32	60	2-23/64	0.29	0.64
<b>BRCP28</b>	28	#9	30M	44	1-47/64	68	2-43/64	0.42	0.93
<b>BRCP30</b>	30	-	-	49	1-59/64	70	2-3/4	0.57	1.26
<b>BRCP32</b>	32	#10	-	49	1-59/64	72	2-53/64	0.58	1.28
<b>BRCP36</b>	36	#11	35M	54	2-1/8	78	3-5/64	0.78	1.72
<b>BRCP40</b>	40	-	-	59	2-21/64	80	3-5/32	0.91	2.01

(\*) Bar diameters and weights may vary by country.

### NOTES

- Dimensions shown in chart are typical.
- It is recommended to lock the splices using a wrench. No specific torque needed.
- It is recommended to store away the thread protecting caps for reuse.
- Refer to the complete product installation instructions before starting the installation.

Regbar Construction  
Technology



#### HEADQUARTERS

Caferağa Mah. Albay Faik Sözdener Cad.  
No:7/23 Kadıköy - İstanbul - TURKEY  
**Phone:** +90 216 405 21 55 pbx  
**E-mail:** info@regbar.com

#### PLANT

Sanayi Mah. İzmit Sanayi Sitesi  
13. Cadde 318 Blok Apt. No: 318/132  
No:9 İzmit - Kocaeli - TURKEY  
**Mobile:** +90 541 932 37 51

#### RUSSIA BRANCH

Lesnaya Plaza 4, 4th Lesnoy  
Pereulok No: 24/8 125047  
Moscow / RUSSIA







# REGBAR

CONSTRUCTION TECHNOLOGY SOLUTIONS



[www.regbar.com](http://www.regbar.com)  
[info@regbar.com](mailto:info@regbar.com)

#### HEADQUARTERS

Caferağa Mah. Albay Faik Sözdener Cad.  
No:7/23 Kadıköy - İstanbul - TURKEY  
**Phone:** +90 216 405 21 55 pbx  
**E-mail:** [info@regbar.com](mailto:info@regbar.com)

#### PLANT

Sanayi Mah. İzmit Sanayi Sitesi  
13. Cadde 318 Blok Apt. No: 318/132  
No:9 İzmit - Kocaeli - TURKEY  
**Mobile:** +90 541 932 37 51

#### RUSSIA BRANCH

Lesnaya Plaza 4, 4th Lesnoy  
Pereulok No: 24/8 125047  
Moscow / RUSSIA