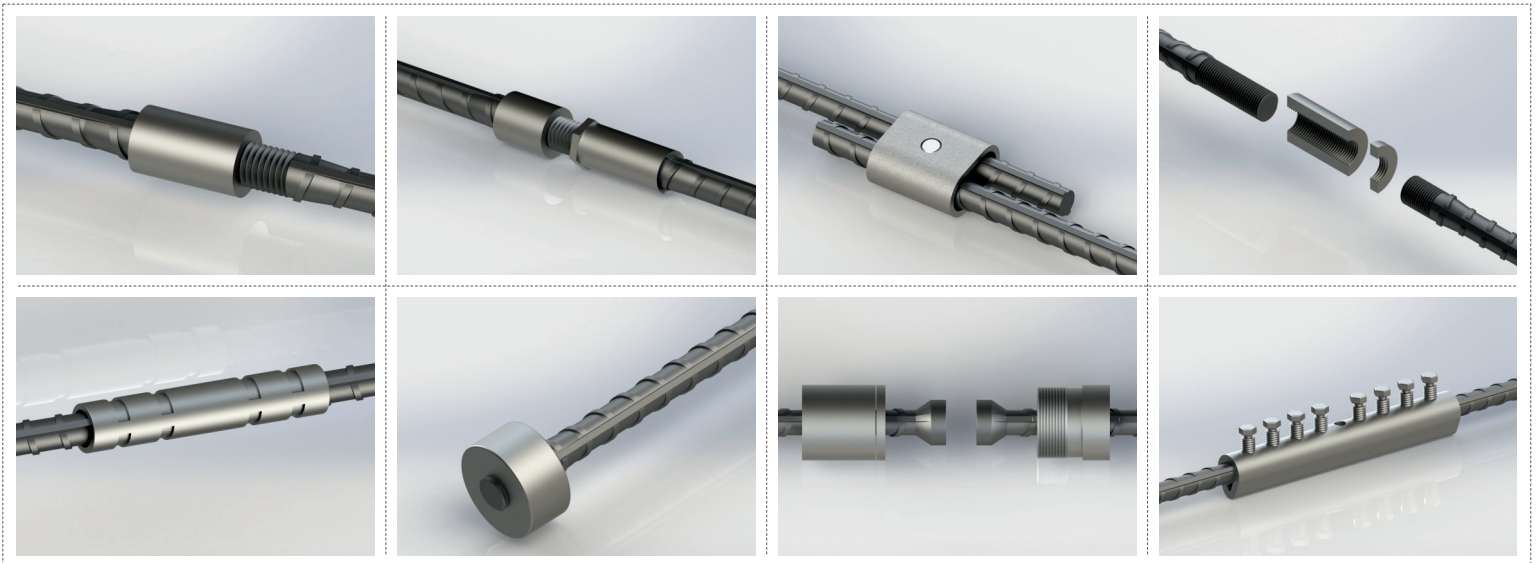


MECHANICAL REBAR COUPLER



REGBAR
CONSTRUCTION TECHNOLOGY SOLUTIONS

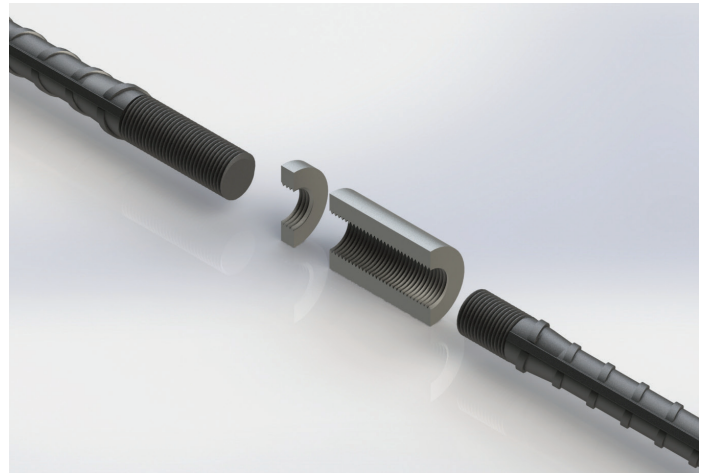
posCOUP

MECHANICAL REINFORCING BAR SPLICING SYSTEM

posCOUP Coupler

Properties

- ▶ Meets or exceeds the requirements of major international building codes
- ▶ A wide range of international rebar grades and deformation patterns can be used
- ▶ Can be used for splicing pre-fabricated cages
Installs easily and fast
- ▶ Slim design reduces concrete cover
- ▶ Available in sizes 12 mm - 40 mm
- ▶ Allows simple visual inspection



Poscoup Couplers are designed to splice the same diameter bars where at least one bar is not free to rotate. The couplers are machined to have parallel threads inside which create a mechanical connection of two corresponding reinforcing steel.

These rebars which will be connected are put together in site for mounting and the mounting is completed only by screwing the coupler by hand from right to left (with no need for extra torque wrench and controlling device). Typical applications include splicing of the column bars (or shearwalls), splicing of the beam bars, staircase connections.

Poscoup couplers are designed to meet or exceed major international building codes including:

AASHTO	ACI 349	IBC Type 1 (125% Specified Yield)	NF A 35-020-1
ABNT NBR 8548:1984	ACI 359	IBC Type 2 (Specified Ultimate)	NF EN 1992-1-1
ACI 318 Type 1 (125% Specified Yield)	AS3600	ISO 15835	Turkish Seismic Code 2018
ACI 318 Type 2 (Specified Ultimate)	Eurocode 2	GOST 34278	US Army Corps of Engineers

HEADQUARTERS

Caferağa Mah. Albay Faik Sözdener Cad.
No:7/23 Kadıköy - İstanbul - TURKEY
Phone: +90 216 405 21 55 pbx
E-mail: info@regbar.com

PLANT

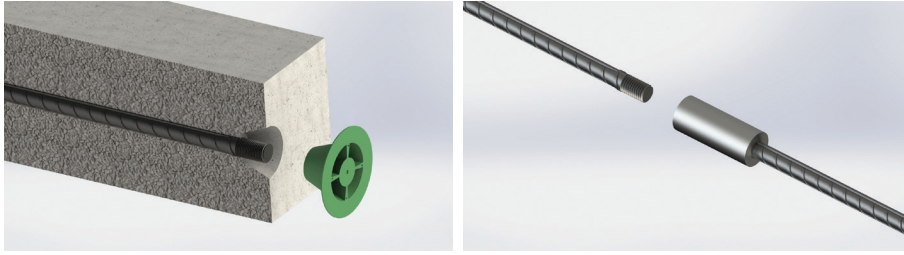
Sanayi Mah. İzmit Sanayi Sitesi
13. Cadde 318 Blok Apt. No: 318/132
No:9 İzmit - Kocaeli - TURKEY
Mobile: +90 541 932 37 51

RUSSIA BRANCH

Lesnaya Plaza 4, 4th Lesnoy
Pereulok No: 24/8 125047
Moscow / RUSSIA



Simple Installation



1. Remove the protecting concrete and thread cap from the rebar to be connected.

2. Align the corresponding two rebar. Screw the coupler and the nut from where it is mounted to the other threaded bar.

Product Code	Bar Sizes			Outside Diameter (*)		Length		Unit Weight (*)	
	Metric [mm]	US	Canada	[mm]	["]	[mm]	["]	[kg]	[lb]
PSCP12	12	#4	10M	19	3/4	38	1-1/2	0.05	0.12
PSCP14	14	-	-	24	15/16	42	1-21/32	0.09	0.2
PSCP16	16	#5	15M	29	1-9/64	47	1-27/32	0.14	0.31
PSCP18	18	-	-	34	1-11/32	50	1-31/32	0.21	0.47
PSCP20	20	#6	20M	34	1-11/32	54	2-1/8	0.22	0.49
PSCP22	22	#7	-	39	1-17/32	58	2-9/32	0.28	0.62
PSCP26	26	#8	25M	39	1-17/32	66	2-19/32	0.29	0.64
PSCP28	28	#9	30M	44	1-47/64	68	2-43/64	0.42	0.93
PSCP30	30	-	-	49	1-59/64	70	2-3/4	0.57	1.26
PSCP32	32	#10	-	49	1-59/64	72	2-53/64	0.58	1.28
PSCP36	36	#11	35M	54	2-1/8	82	3-15/64	0.78	1.72
PSCP40	40	-	-	59	2-21/64	90	3-35/64	0.91	2.01

(*) Bar diameters and weights may vary by country.

NOTES

- Dimensions shown in chart are typical.
- It is recommended to lock the splices using a wrench. No specific torque needed.
- It is recommended to store away the thread protecting caps for reuse.
- Refer to the complete product installation instructions before starting the installation.

Regbar Construction
Technology



HEADQUARTERS

Caferağa Mah. Albay Faik Sözdener Cad.
No:7/23 Kadıköy - İstanbul - TURKEY
Phone: +90 216 405 21 55 pbx
E-mail: info@regbar.com

PLANT

Sanayi Mah. İzmit Sanayi Sitesi
13. Cadde 318 Blok Apt. No: 318/132
No:9 İzmit - Kocaeli - TURKEY
Mobile: +90 541 932 37 51

RUSSIA BRANCH

Lesnaya Plaza 4, 4th Lesnoy
Pereulok No: 24/8 125047
Moscow / RUSSIA





REGBAR

CONSTRUCTION TECHNOLOGY SOLUTIONS



www.regbar.com

info@regbar.com

HEADQUARTERS

Caferağa Mah. Albay Faik Sözdener Cad.
No:7/23 Kadıköy - İstanbul - TURKEY

Phone: +90 216 405 21 55 pbx

E-mail: info@regbar.com

PLANT

Sanayi Mah. İzmit Sanayi Sitesi
13. Cadde 318 Blok Apt. No: 318/132
No:9 İzmit - Kocaeli - TURKEY

Mobile: +90 541 932 37 51

RUSSIA BRANCH

Lesnaya Plaza 4, 4th Lesnoy
Pereulok No: 24/8 125047
Moscow / RUSSIA