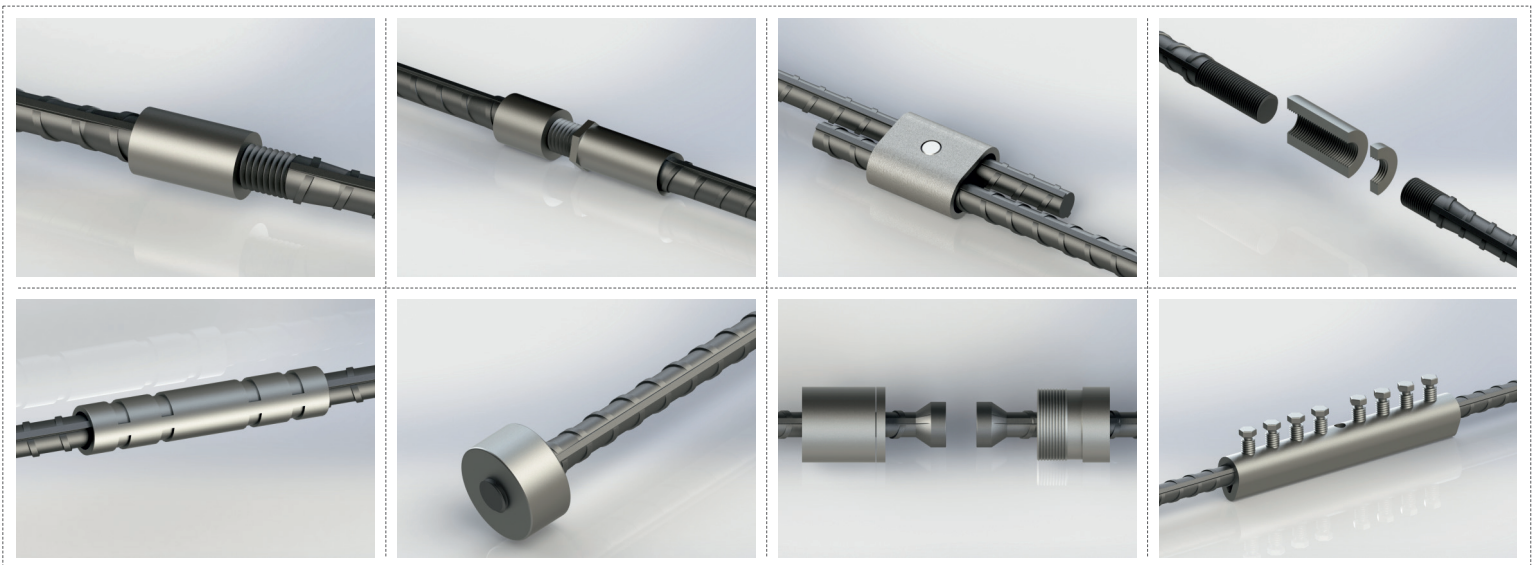


MECHANICAL REBAR COUPLER



REGBAR
CONSTRUCTION TECHNOLOGY SOLUTIONS

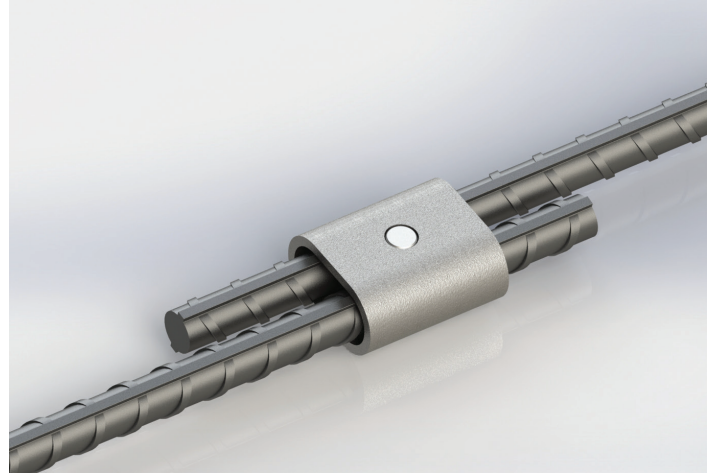
fastCOUP

MECHANICAL REINFORCING BAR SPLICING SYSTEM

fastCOUP Coupler

Properties

- ▶ No special bar-end treatment gives the ability to connect virtually any bar condition
- ▶ Only one-man needed to operate portable pin-driver
- ▶ Installs easily and fast
- ▶ Easy field adjustability provides greater job site versatility
- ▶ Available in sizes 12 mm - 20 mm
- ▶ Allows simple visual inspection



Fastcoup compatible Pin Driver is supplied by Regbar upon request.

Fastcoup Couplers consists of an oval shaped steel sleeve and a wedge pin. The sleeve is placed around two steel bars that overlap. The wedge pin is placed on the sleeve and inserted into a handheld hydraulic pin driver. The pin is then driven to complete the connection through the pre-drilled hole in the sleeve and between the bars. In seconds, a pin is driven.

Typical applications include road repair, bridge repair, precast elements, spiral reinforcement connection, stirrups and ties.

Bridgescoup couplers are designed to meet or exceed major international building codes including:

AASHTO	ACI 349	IBC Type 1 (125% Specified Yield)	NF A 35-020-1
ABNT NBR 8548:1984	ACI 359	Eurocode 2	GOST 34278
ACI 318 Type 1 (125% Specified Yield)	AS3600	ISO 15835	Turkish Seismic Code 2018

HEADQUARTERS

Caferağa Mah. Albay Faik Sözdener Cad.
No:7/23 Kadıköy - İstanbul - TURKEY
Phone: +90 216 405 21 55 pbx
E-mail: info@regbar.com

PLANT

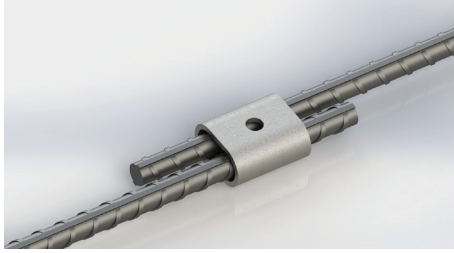
Sanayi Mah. İzmit Sanayi Sitesi
13. Cadde 318 Blok Apt. No: 318/132
No:9 İzmit - Kocaeli - TURKEY
Mobile: +90 541 932 37 51

RUSSIA BRANCH

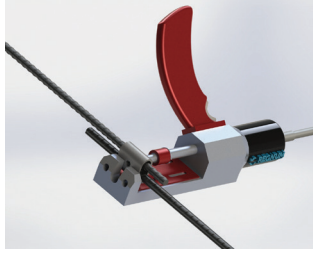
Lesnaya Plaza 4, 4th Lesnoy
Pereulok No: 24/8 125047
Moscow / RUSSIA



Simple Installation



1. Position the sleeve onto the rebar; bar ends must be at least flush with sleeve ends.



2. Position the pin-driver on the coupler and drive the pin.

Product Code	Bar Sizes			Length*		Width*		Unit Weight (*)	
	Metric [mm]	US	Canada	[mm]	["]	[mm]	["]	[kg]	[lb]
FSCP12	12	#4	10M	48	1-5/8	27	1-1/16	0.2	0.45
FSCP16	16	#5	15M	57	1-15/16	33	1-5/16	0.34	0.75
FSCP20	20	#6	20M	70	2-3/8	40	1-15/16	0.62	1.37

(*) Dimensions and weights may vary by country.

NOTES

- Dimensions shown in chart are typical.
- Refer to the complete product installation instructions before starting the installation.

Regbar Construction
Technology



HEADQUARTERS

Caferağa Mah. Albay Faik Sözdener Cad.
No:7/23 Kadıköy - İstanbul - TURKEY
Phone: +90 216 405 21 55 pbx
E-mail: info@regbar.com

PLANT

Sanayi Mah. İzmit Sanayi Sitesi
13. Cadde 318 Blok Apt. No: 318/132
No:9 İzmit - Kocaeli - TURKEY
Mobile: +90 541 932 37 51

RUSSIA BRANCH

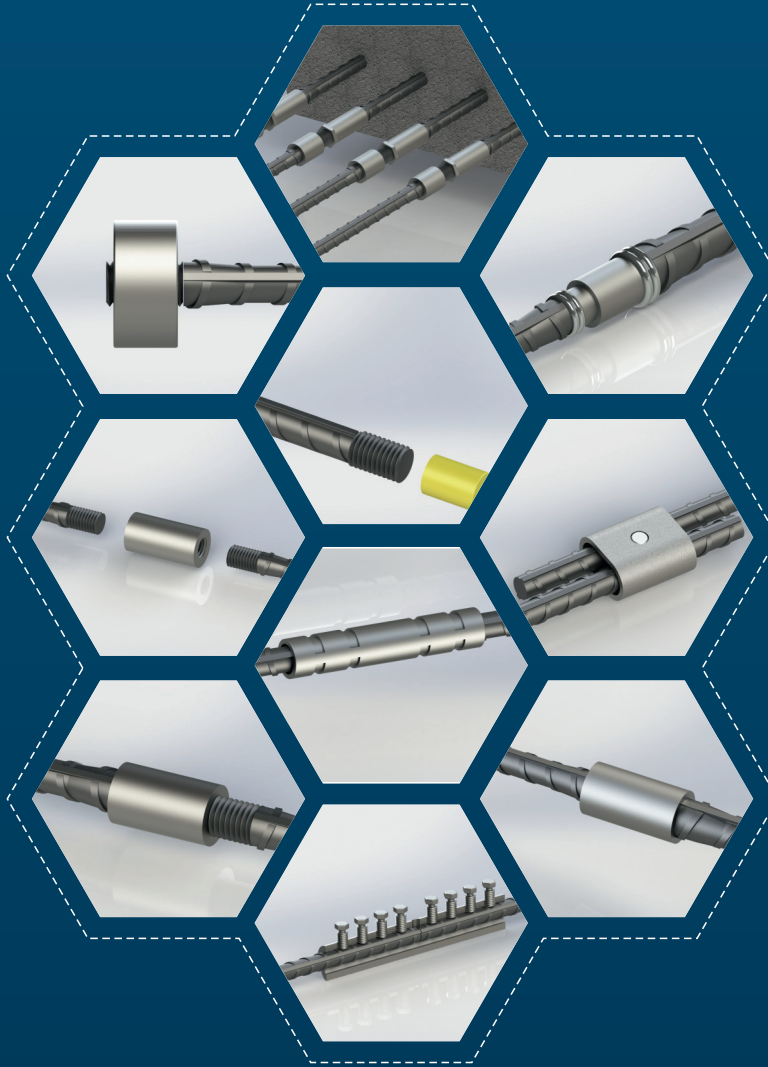
Lesnaya Plaza 4, 4th Lesnoy
Pereulok No: 24/8 125047
Moscow / RUSSIA





REGBAR

CONSTRUCTION TECHNOLOGY SOLUTIONS



www.regbar.com
info@regbar.com

HEADQUARTERS

Caferağa Mah. Albay Faik Sözdener Cad.
No:7/23 Kadıköy - İstanbul - TURKEY
Phone: +90 216 405 21 55 pbx
E-mail: info@regbar.com

PLANT

Sanayi Mah. İzmit Sanayi Sitesi
13. Cadde 318 Blok Apt. No: 318/132
No:9 İzmit - Kocaeli - TURKEY
Mobile: +90 541 932 37 51

RUSSIA BRANCH

Lesnaya Plaza 4, 4th Lesnoy
Pereulok No: 24/8 125047
Moscow / RUSSIA