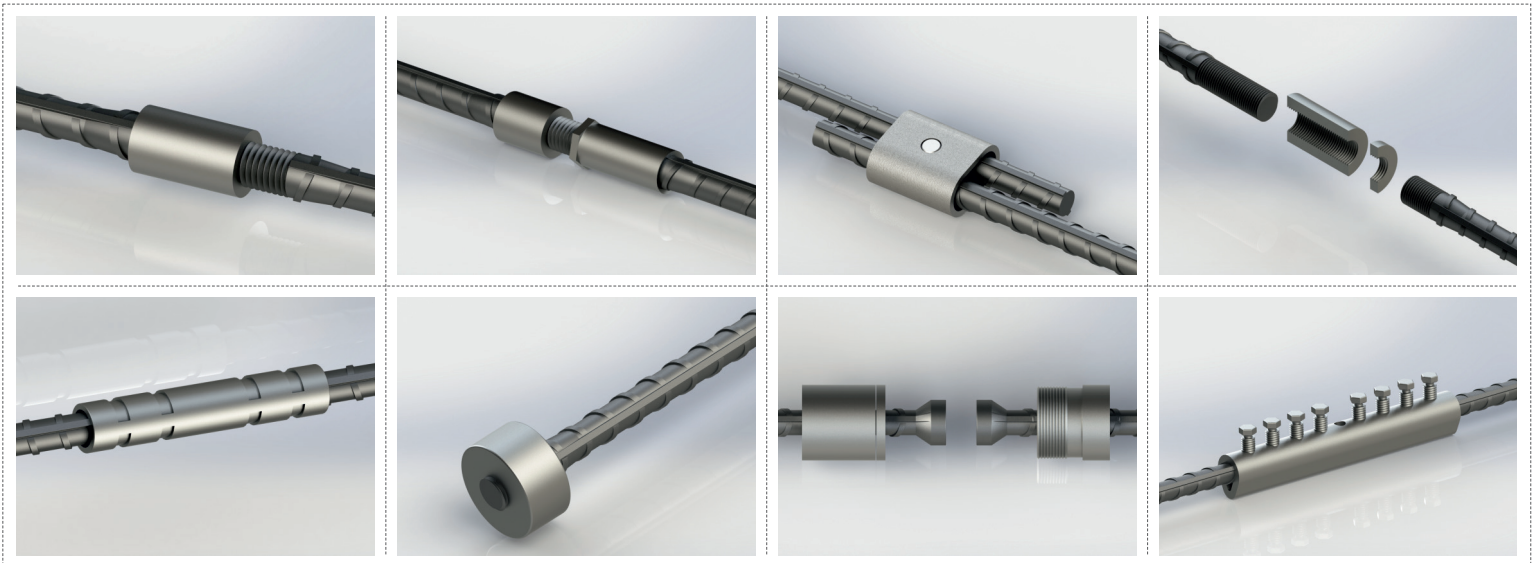


# MECHANICAL REBAR COUPLER



**REGBAR**  
CONSTRUCTION TECHNOLOGY SOLUTIONS

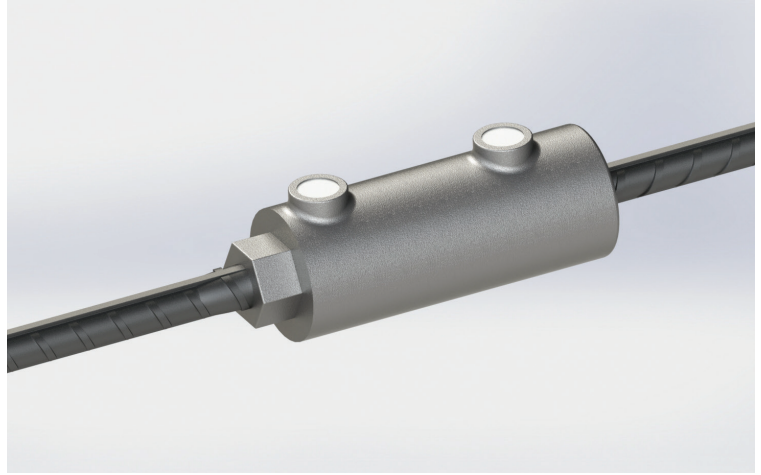
**groutCOUP**

## MECHANICAL REINFORCING BAR SPLICING SYSTEM

# groutCOUP Coupler

### Properties

- ▶ Provides structural integrity between precast elements.
- ▶ Eliminates field welding
- ▶ Meets or exceeds the requirements of major international building codes
- ▶ A wide range of international rebar grades and deformation patterns can be used
- ▶ Installs easily and fast
- ▶ Available in sizes 16 mm - 40 mm
- ▶ Allows simple visual inspection



Groutcoup Couplers are specifically designed to structurally join precast structural elements such as columns and shearwalls. The sleeve is assembled to the Regbar threaded rebar and positioned within the form at the precast plant. Groutcoup sleeve is filled with a high performance cementitious grout, creating an interlocking bond between the coupler and the adjoining bar at the jobsite. Threaded bars can be purchased from Regbar or Regbar can provide a threading machine to precast supplier.

Typical applications include splicing of the precast constructions such as column to column, column to foundation, shear wall to foundation, shear wall to shear wall, panel to panel, walls to floor slab.

Groutcoup couplers are designed to meet or exceed major international building codes including:

IBC Type 1 (125% Specified Yield)	IBC Type 2 (Specified Ultimate)	ACI 318 Type 1 (125% Specified Yield)	ACI 318 Type 2 (Specified Ultimate)
Turkish Seismic Code 2018			

#### HEADQUARTERS

Caferağa Mah. Albay Faik Sözdener Cad.  
No:7/23 Kadıköy - İstanbul - TURKEY  
**Phone:** +90 216 405 21 55 pbx  
**E-mail:** info@regbar.com

#### PLANT

Sanayi Mah. İzmit Sanayi Sitesi  
13. Cadde 318 Blok Apt. No: 318/132  
No:9 İzmit - Kocaeli - TURKEY  
**Mobile:** +90 541 932 37 51

#### RUSSIA BRANCH

Lesnaya Plaza 4, 4th Lesnoy  
Pereulok No: 24/8 125047  
Moscow / RUSSIA



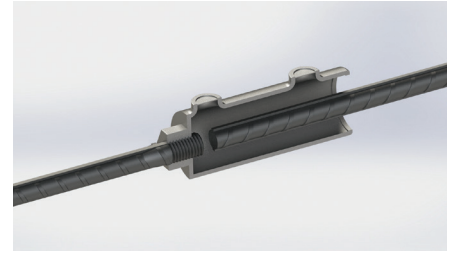
## Simple Installation



1. Screw the coupler on the threaded bar.  
Cast the concrete element.



2. Align the corresponding precast element.



3. Fill the coupler with special grout to ensure connection.

Product Code	Bar Sizes			Outside Diameter (*)		Length		Embedment Length	
	Metric [mm]	US	Canada	[mm]	[ " ]	[mm]	[ " ]	[mm]	[ " ]
GRCP16	16	#5	15M	199	7-13/16	65	6-1/8	156	7/8
GRCP20	20	#6	20M	199	7-13/16	65	6-1/8	156	1-1/8
GRCP22	22	#7	-	199	7-13/16	65	6-1/8	156	1-1/4
GRCP26	26	#8	25M	219	8-5/8	68	7	178	1-3/8
GRCP28	28	#9	30M	248	9-3/4	72	8	203	1-1/2
GRCP32	32	#10	-	275	10-13/16	76	9	229	1-9/16
GRCP36	36	#11	35M	303	11-15/16	79	9-7/8	251	1-11/16
GRCP40	40	-	-	386	15-3/16	94	12-3/4	324	2-1/4

(\*) Bar diameters and weights may vary by country.

### NOTES

- Dimensions shown in chart are typical.
- Refer to the complete product installation instructions before starting the installation.

Regbar Construction  
Technology



#### HEADQUARTERS

Caferağa Mah. Albay Faik Sözdener Cad.  
No:7/23 Kadıköy - İstanbul - TURKEY  
Phone: +90 216 405 21 55 pbx  
E-mail: info@regbar.com

#### PLANT

Sanayi Mah. İzmit Sanayi Sitesi  
13. Cadde 318 Blok Apt. No: 318/132  
No:9 İzmit - Kocaeli - TURKEY  
Mobile: +90 541 932 37 51

#### RUSSIA BRANCH

Lesnaya Plaza 4, 4th Lesnoy  
Pereulok No: 24/8 125047  
Moscow / RUSSIA





# REGBAR

CONSTRUCTION TECHNOLOGY SOLUTIONS



[www.regbar.com](http://www.regbar.com)

[info@regbar.com](mailto:info@regbar.com)

## HEADQUARTERS

Caferağa Mah. Albay Faik Sözdener Cad.  
No:7/23 Kadıköy - İstanbul - TURKEY

**Phone:** +90 216 405 21 55 pbx

**E-mail:** [info@regbar.com](mailto:info@regbar.com)

## PLANT

Sanayi Mah. İzmit Sanayi Sitesi  
13. Cadde 318 Blok Apt. No: 318/132  
No:9 İzmit - Kocaeli - TURKEY

**Mobile:** +90 541 932 37 51

## RUSSIA BRANCH

Lesnaya Plaza 4, 4th Lesnoy  
Pereulok No: 24/8 125047  
Moscow / RUSSIA