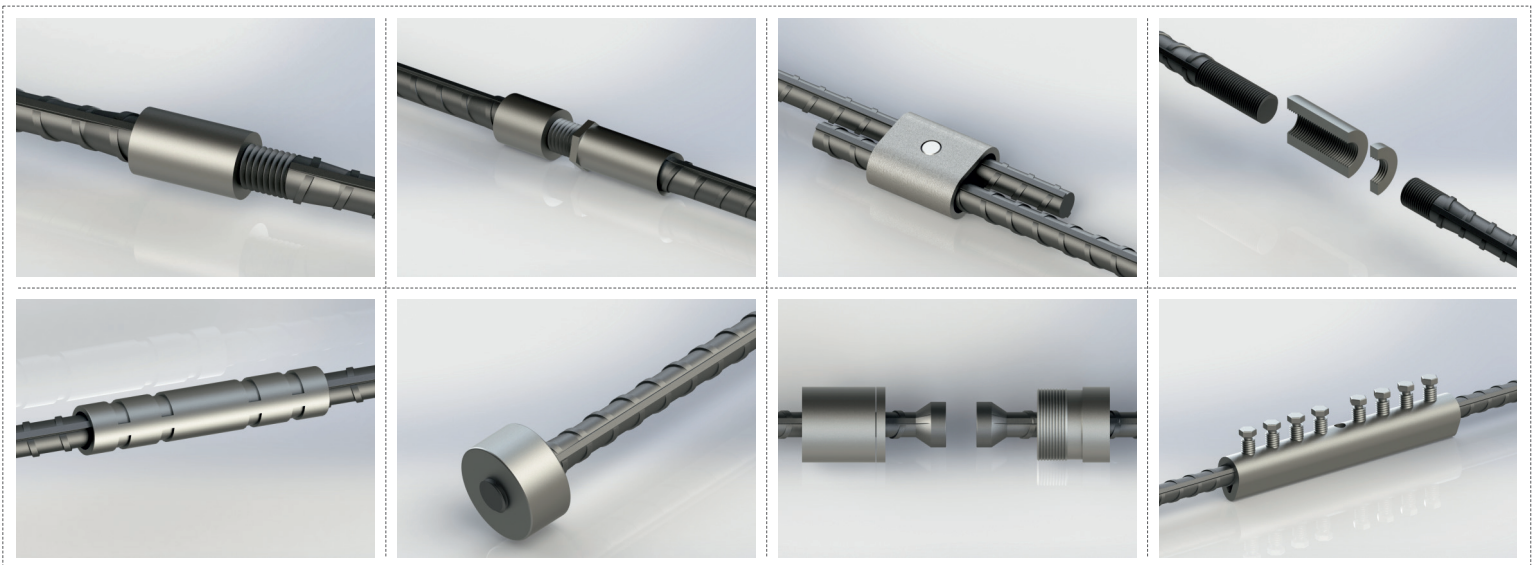


MECHANICAL REBAR COUPLER



REGBAR
CONSTRUCTION TECHNOLOGY SOLUTIONS

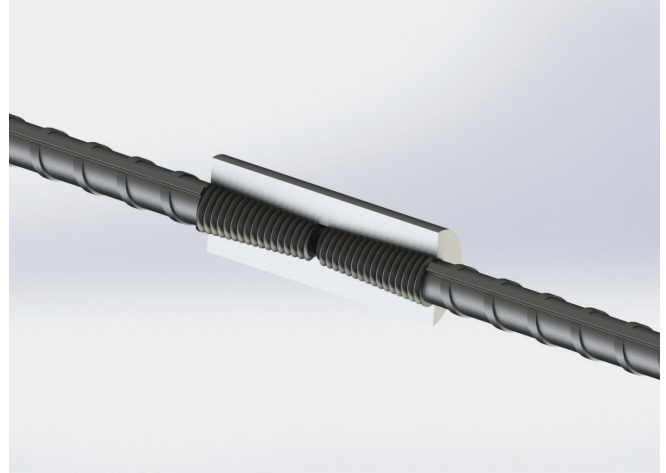
taperCOUP

MECHANICAL REINFORCING BAR SPLICING SYSTEM

taperCOUP Coupler

Properties

- ▶ Meets or exceeds the requirements of major international building codes
- ▶ A wide range of international rebar grades and deformation patterns can be used
- ▶ Cross threading is eliminated with taper threaded design
- ▶ Installs easily and fast
- ▶ Slim design reduces concrete cover
- ▶ Available in sizes 12 mm - 40 mm
- ▶ Allows simple visual inspection



Tapercoup Couplers are designed to splice the same diameter bars where at least one bar can be rotated and moved freely in its axial direction. The couplers are machined to have taper threads inside which create a mechanical connection of two corresponding reinforcing steel.

Typical applications include splicing of the column bars (or shearwalls), splicing of the beam bars, future extensions and segmental pours of concrete.

Tapercoup couplers are designed to meet or exceed major international building codes and Department of Transportation requirements, including:

AASHTO	ACI 349	IBC Type 1 (125% Specified Yield)	NF A 35-020-1
ABNT NBR 8548:1984	ACI 359	IBC Type 2 (Specified Ultimate)	NF EN 1992-1-1
ACI 318 Type 1 (125% Specified Yield)	AS3600	ISO 15835	Turkish Seismic Code 2018
ACI 318 Type 2 (Specified Ultimate)	Eurocode 2	NEN EN 1992-1-1	US Army Corps of Engineers

HEADQUARTERS

Caferağa Mah. Albay Faik Sözdener Cad.
No:7/23 Kadıköy - İstanbul - TURKEY
Phone: +90 216 405 21 55 pbx
E-mail: info@regbar.com

PLANT

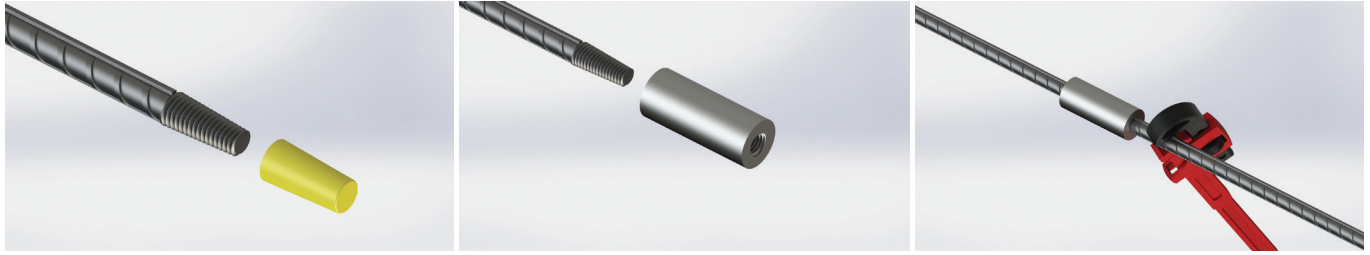
Sanayi Mah. İzmit Sanayi Sitesi
13. Cadde 318 Blok Apt. No: 318/132
No:9 İzmit - Kocaeli - TURKEY
Mobile: +90 541 932 37 51

RUSSIA BRANCH

Lesnaya Plaza 4, 4th Lesnoy
Pereulok No: 24/8 125047
Moscow / RUSSIA



Simple Installation



1. Remove the protecting cap from the rebar. **2.** Screw the coupler on the threaded bar.

3. Align the corresponding two rebar. Rotate the rebar to the middle of coupler. Lock the splice using a wrench.

Product Code	Bar Sizes			Outside Diameter (*)		Length		Unit Weight (*)		Torque Values	
	Metric [mm]	US	Canada	[mm]	["]	[mm]	["]	[kg]	[lb]	[Nm]	[ft-lb]
TPCP12	12	#4	10M	17	43/64	50	1-31/32	0.05	0.12	40	30
TPCP14	14	-	-	22	55/64	56	2-13/64	0.11	0.25	80	60
TPCP16	16	#5	15M	22	55/64	61	2-13/32	0.10	0.23	120	90
TPCP18	18	-	-	27	1-1/16	72	2-53/64	0.2	0.45	150	110
TPCP20	20	#6	20M	27	1-1/16	87	3-27/64	0.21	0.47	180	130
TPCP22	22	#7	-	30	1-3/16	91	3-37/64	0.27	0.6	220	160
TPCP26	26	#8	25M	35	1-3/8	97	3-13/16	0.38	0.84	270	200
TPCP28	28	#9	30M	40	1-37/64	101	3-15/16	0.57	1.26	270	200
TPCP30	30	-	-	40	1-37/64	121	4-49/64	0.60	1.33	300	200
TPCP32	32	#10	-	45	1-49/64	108	4-1/4	0.75	1.66	300	200
TPCP36	36	#11	35M	50	1-31/32	121	4-49/64	1.01	2.23	300	200
TPCP40	40	-	-	55	2-11/64	131	5-5/32	1.30	2.87	350	200

(*) Bar diameters and weights may vary by country.

NOTES

- Dimensions shown in chart are typical.
- Locking the splices using a wrench is a must. Torque values are shown in the table above.
- It is recommended to store away the thread protecting caps for reuse.
- Refer to the complete product installation instructions before starting the installation.

Regbar Construction
Technology



HEADQUARTERS

Caferağa Mah. Albay Faik Sözdener Cad.
No:7/23 Kadıköy - İstanbul - TURKEY
Phone: +90 216 405 21 55 pbx
E-mail: info@regbar.com

PLANT

Sanayi Mah. İzmit Sanayi Sitesi
13. Cadde 318 Blok Apt. No: 318/132
No:9 İzmit - Kocaeli - TURKEY
Mobile: +90 541 932 37 51

RUSSIA BRANCH

Lesnaya Plaza 4, 4th Lesnoy
Pereulok No: 24/8 125047
Moscow / RUSSIA





REGBAR

CONSTRUCTION TECHNOLOGY SOLUTIONS



www.regbar.com
info@regbar.com

HEADQUARTERS

Caferağa Mah. Albay Faik Sözdener Cad.
No:7/23 Kadıköy - İstanbul - TURKEY
Phone: +90 216 405 21 55 pbx
E-mail: info@regbar.com

PLANT

Sanayi Mah. İzmit Sanayi Sitesi
13. Cadde 318 Blok Apt. No: 318/132
No:9 İzmit - Kocaeli - TURKEY
Mobile: +90 541 932 37 51

RUSSIA BRANCH

Lesnaya Plaza 4, 4th Lesnoy
Pereulok No: 24/8 125047
Moscow / RUSSIA