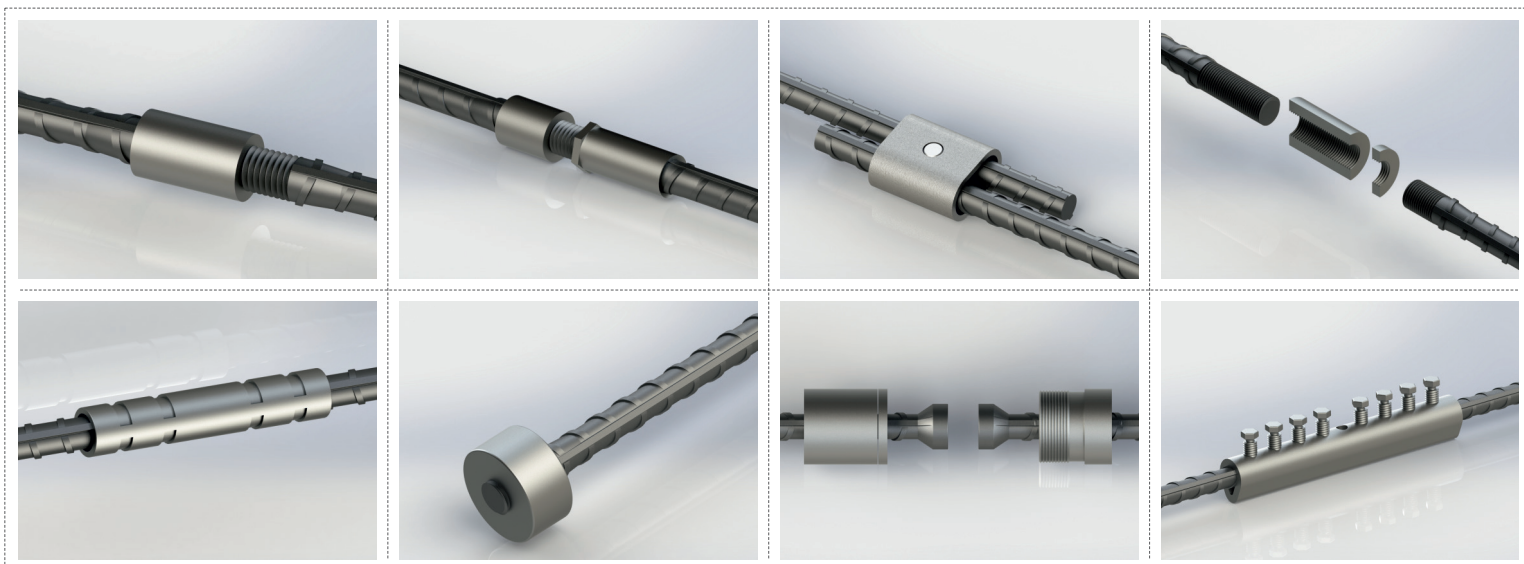


MECHANICAL REBAR COUPLER



REGBAR
CONSTRUCTION TECHNOLOGY SOLUTIONS

doubleCOUP

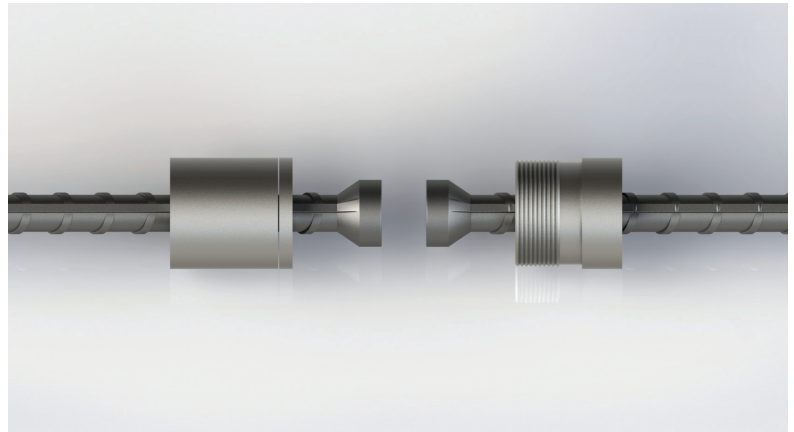
www.regbar.com / info@regbar.com

MECHANICAL REINFORCING BAR SPLICING SYSTEM

doubleCOUP Coupler

Properties

- ▶ Meets or exceeds the requirements of major international building codes
- ▶ A wide range of international rebar grades and deformation patterns can be used
- ▶ Upset heads can be field or shop fabricated
- ▶ Installs easily and fast
- ▶ Available in sizes 12 mm - 36 mm
- ▶ Allows simple visual inspection



Doublecoup Couplers are designed to splice the same diameter bars where none of the bars can be rotated and moved freely in its axial direction. Two parts of the coupler are machined to get parallel threads inside which create a mechanical sleeve between corresponding reinforcing steels. Upsetting of rebar ends can be fabricated in field or shop.

Typical applications include splicing of the column bars (or shearwalls), bent bars, pre-tied cages, splicing of the beam bars, future extensions.

Barcoup couplers are designed to meet or exceed major international building including:

AASHTO	ACI 349	IBC Type 1 (125% Specified Yield)	NF A 35-020-1
ABNT NBR 8548:1984	ACI 359	IBC Type 2 (Specified Ultimate)	NF EN 1992-1-1
ACI 318 Type 1 (125% Specified Yield)	AS3600	ISO 15835	Turkish Seismic Code 2018
ACI 318 Type 2 (Specified Ultimate)	Eurocode 2	GOST 34278	US Army Corps of Engineers

HEADQUARTERS

Caferağa Mah. Albay Faik Sözdener Cad.
No:7/23 Kadıköy - İstanbul - TURKEY
Phone: +90 216 405 21 55 pbx
E-mail: info@regbar.com

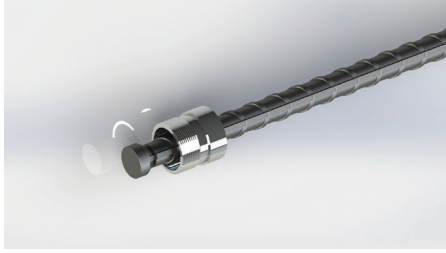
PLANT

Sanayi Mah. İzmit Sanayi Sitesi
13. Cadde 318 Blok Apt. No: 318/132
No:9 İzmit - Kocaeli - TURKEY
Mobile: +90 541 932 37 51

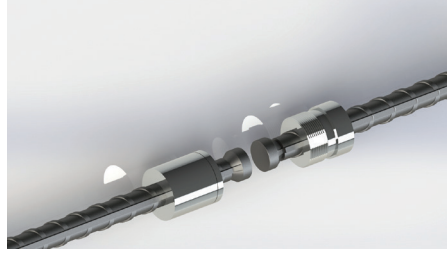
RUSSIA BRANCH

Lesnaya Plaza 4, 4th Lesnoy
Pereulok No: 24/8 125047
Moscow / RUSSIA

Simple Installation



1. Assemble the first part of the coupler to the reinforcing bar.



2. Align the corresponding rebar. Rotate the other part of coupler to create a mechanical connection.

Product Code	Bar Sizes			Outside Diameter (*)		Length		Unit Weight (*)	
	Metric [mm]	US	Canada	[mm]	["]	[mm]	["]	[kg]	[lb]
DBCP12	12	#4	10M	35	1-3/8	51	2	0.07	0.16
DBCP16	16	#5	15M	38	1-1/2	54	2-1/8	0.16	0.36
DBCP20	20	#6	20M	41	1-5/8	60	2-3/8	0.24	0.53
DBCP22	22	#7	-	48	1-7/8	73	2-7/8	0.31	0.69
DBCP26	26	#8	25M	54	2-1/8	79	3-1/8	0.34	0.75
DBCP28	28	#9	30M	60	2-3/8	89	3-1/2	0.49	1.09
DBCP32	32	#10	-	67	2-5/8	95	3-3/4	0.68	1.5
DBCP36	36	#11	35M	73	2-7/8	108	4-1/4	0.91	2.01

(*) Bar diameters and weights may vary by country.

NOTES

- Dimensions shown in chart are typical.
- Refer to the complete product installation instructions before starting the installation.

Regbar Construction
Technology



HEADQUARTERS

Caferağa Mah. Albay Faik Sözdener Cad.
No:7/23 Kadıköy - İstanbul - TURKEY
Phone: +90 216 405 21 55 pbx
E-mail: info@regbar.com

PLANT

Sanayi Mah. İzmit Sanayi Sitesi
13. Cadde 318 Blok Apt. No: 318/132
No:9 İzmit - Kocaeli - TURKEY
Mobile: +90 541 932 37 51

RUSSIA BRANCH

Lesnaya Plaza 4, 4th Lesnoy
Pereulok No: 24/8 125047
Moscow / RUSSIA





REGBAR

CONSTRUCTION TECHNOLOGY SOLUTIONS



www.regbar.com

info@regbar.com

HEADQUARTERS

Caferağa Mah. Albay Faik Sözdener Cad.
No:7/23 Kadıköy - İstanbul - TURKEY

Phone: +90 216 405 21 55 pbx

E-mail: info@regbar.com

PLANT

Sanayi Mah. İzmit Sanayi Sitesi
13. Cadde 318 Blok Apt. No: 318/132
No:9 İzmit - Kocaeli - TURKEY

Mobile: +90 541 932 37 51

RUSSIA BRANCH

Lesnaya Plaza 4, 4th Lesnoy
Pereulok No: 24/8 125047
Moscow / RUSSIA