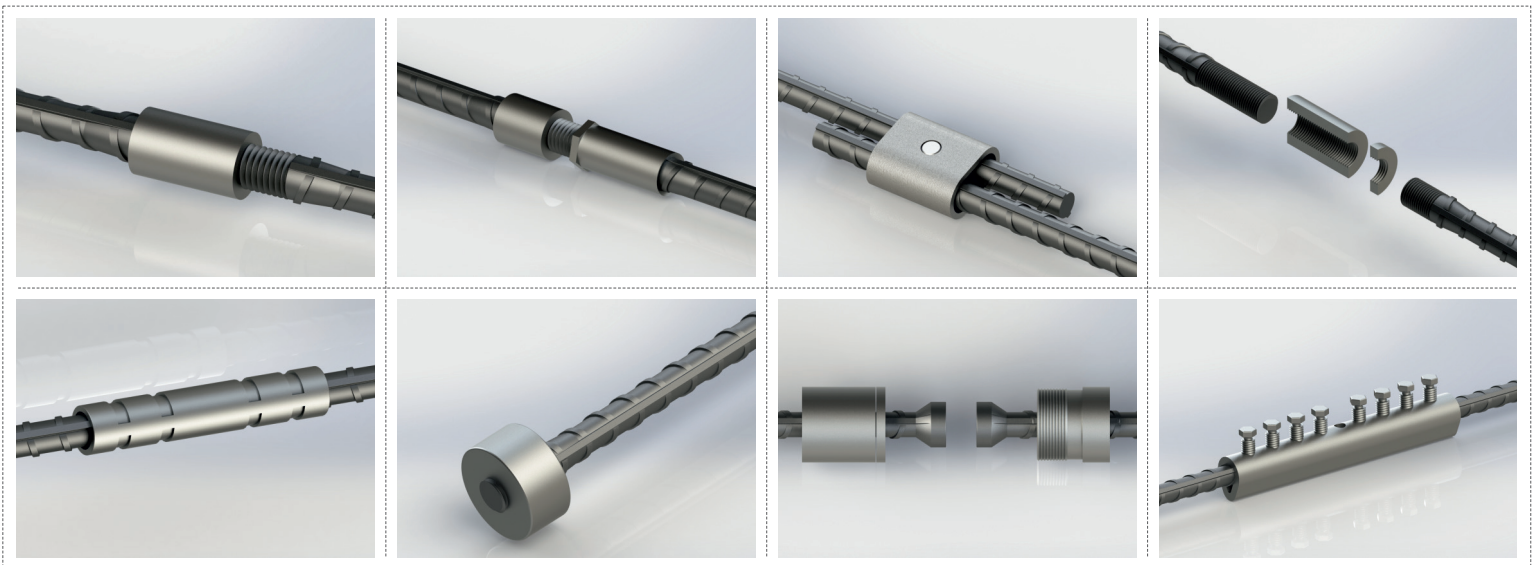


MECHANICAL REBAR COUPLER



REGBAR
CONSTRUCTION TECHNOLOGY SOLUTIONS

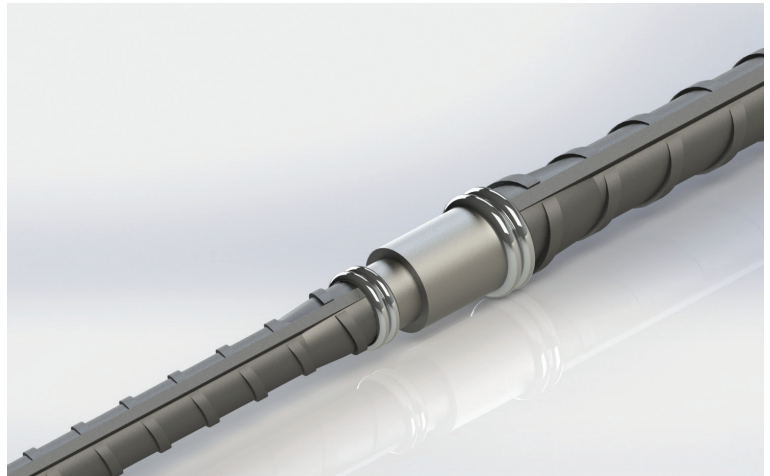
fricCOUP

MECHANICAL REINFORCING BAR SPLICING SYSTEM

fricCOUP Coupler

Properties

- ▶ Meets or exceeds the requirements of major international building codes
- ▶ A wide range of international rebar grades and deformation patterns can be used
- ▶ Production in plants with CNC lathes results in high quality product with more accurate & consistent threads
- ▶ Installs easily and fast
- ▶ Available in sizes 12 mm - 40 mm
- ▶ Allows simple visual inspection



Friccoup Couplers are designed to splice the same diameter bars where at least one bar can be rotated and moved freely in its axial direction. Rotary Friction Welding (RFW) is a solid-state welding process that generates heat through mechanical friction between workpieces in relative rotation motion to one another, with the addition of a lateral force called "upset" to plastically displace and fuse the materials.

Regbar Friccoup Coupler parts are welded onto the appropriate reinforcing bars using the computer controlled Friction Welder System. This process is faster than the threading of rebars required by other systems. Typical applications include splicing of the column bars (or shearwalls), splicing of the beam bars, future extensions, top-down constructions and segmental pours of concrete.

Barcoup couplers are designed to meet or exceed major international building codes, including:

AASHTO	ACI 349	IBC Type 1 (125% Specified Yield)	NF A 35-020-1
ABNT NBR 8548:1984	ACI 359	IBC Type 2 (Specified Ultimate)	NF EN 1992-1-1
ACI 318 Type 1 (125% Specified Yield)	AS3600	ISO 15835	Turkish Seismic Code 2018
ACI 318 Type 2 (Specified Ultimate)	Eurocode 2	GOST 34278	US Army Corps of Engineers

HEADQUARTERS

Caferağa Mah. Albay Faik Sözdener Cad.
No:7/23 Kadıköy - İstanbul - TURKEY
Phone: +90 216 405 21 55 pbx
E-mail: info@regbar.com

PLANT

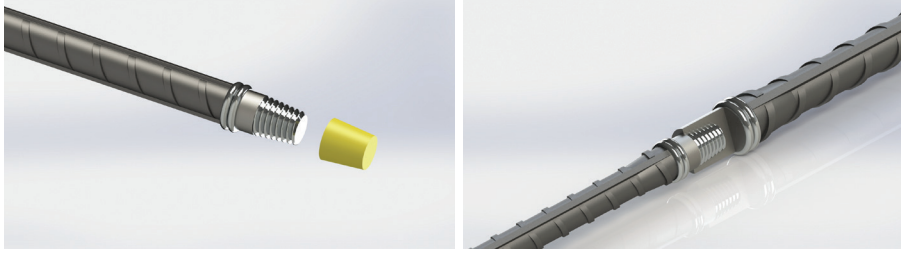
Sanayi Mah. İzmit Sanayi Sitesi
13. Cadde 318 Blok Apt. No: 318/132
No:9 İzmit - Kocaeli - TURKEY
Mobile: +90 541 932 37 51

RUSSIA BRANCH

Lesnaya Plaza 4, 4th Lesnoy
Pereulok No: 24/8 125047
Moscow / RUSSIA



Simple Installation



1. Remove the protecting cap from the rebar with male friccoup coupler.

2. Align the corresponding rebar with female friccoup. Rotate the rebar until there is no further movement available between the two sections.

Product Code	Bar Sizes			Male Outside Diameter (*)		Male Part Length		Female Outside Diameter (*)		Female Part Length		Total Unit Weight (*)	
	Metric [mm]	US	Canada	[mm]	["]	[mm]	["]	[mm]	["]	[mm]	["]	[kg]	[lb]
FRCP12	12	#4	10M	14	35/64	38	1-1/2	19	3/4	29	1-9/64	0.06	0.14
FRCP16	14	-	-	18	45/64	41	1-39/64	25	63/64	32	1-17/64	0.1	0.23
FRCP20	16	#5	15M	19	3-2019	43	1-11/16	25	63/64	40	1-37/64	0.12	0.27
FRCP26	18	-	-	25	63/64	55	2-11/64	34	1-11/32	50	1-31/32	0.27	0.6
FRCP28	20	#6	20M	28	1-7/64	60	2-23/64	38	1-1/2	60	2-23/64	0.38	0.84
FRCP32	22	#7	-	32	1-17/64	63	2-31/64	42	1-21/32	63	2-31/64	0.51	1.13
FRCP40	26	#8	25M	40	1-37/64	75	2-61/64	53	2-3/32	70	2-3/4	0.92	2.03

(*) Bar diameters and weights may vary by country.

NOTES

- Dimensions shown in chart are typical.
- It is recommended to lock the splices using a wrench. No specific torque needed.
- It is recommended to store away the thread protecting caps for reuse.
- Refer to the complete product installation instructions before starting the installation.

Regbar Construction
Technology



HEADQUARTERS

Caferağa Mah. Albay Faik Sözdener Cad.
No:7/23 Kadıköy - İstanbul - TURKEY
Phone: +90 216 405 21 55 pbx
E-mail: info@regbar.com

PLANT

Sanayi Mah. İzmit Sanayi Sitesi
13. Cadde 318 Blok Apt. No: 318/132
No:9 İzmit - Kocaeli - TURKEY
Mobile: +90 541 932 37 51

RUSSIA BRANCH

Lesnaya Plaza 4, 4th Lesnoy
Pereulok No: 24/8 125047
Moscow / RUSSIA





REGBAR

CONSTRUCTION TECHNOLOGY SOLUTIONS



www.regbar.com

info@regbar.com

HEADQUARTERS

Caferağa Mah. Albay Faik Sözdener Cad.
No:7/23 Kadıköy - İstanbul - TURKEY

Phone: +90 216 405 21 55 pbx

E-mail: info@regbar.com

PLANT

Sanayi Mah. İzmit Sanayi Sitesi
13. Cadde 318 Blok Apt. No: 318/132
No:9 İzmit - Kocaeli - TURKEY

Mobile: +90 541 932 37 51

RUSSIA BRANCH

Lesnaya Plaza 4, 4th Lesnoy
Pereulok No: 24/8 125047
Moscow / RUSSIA