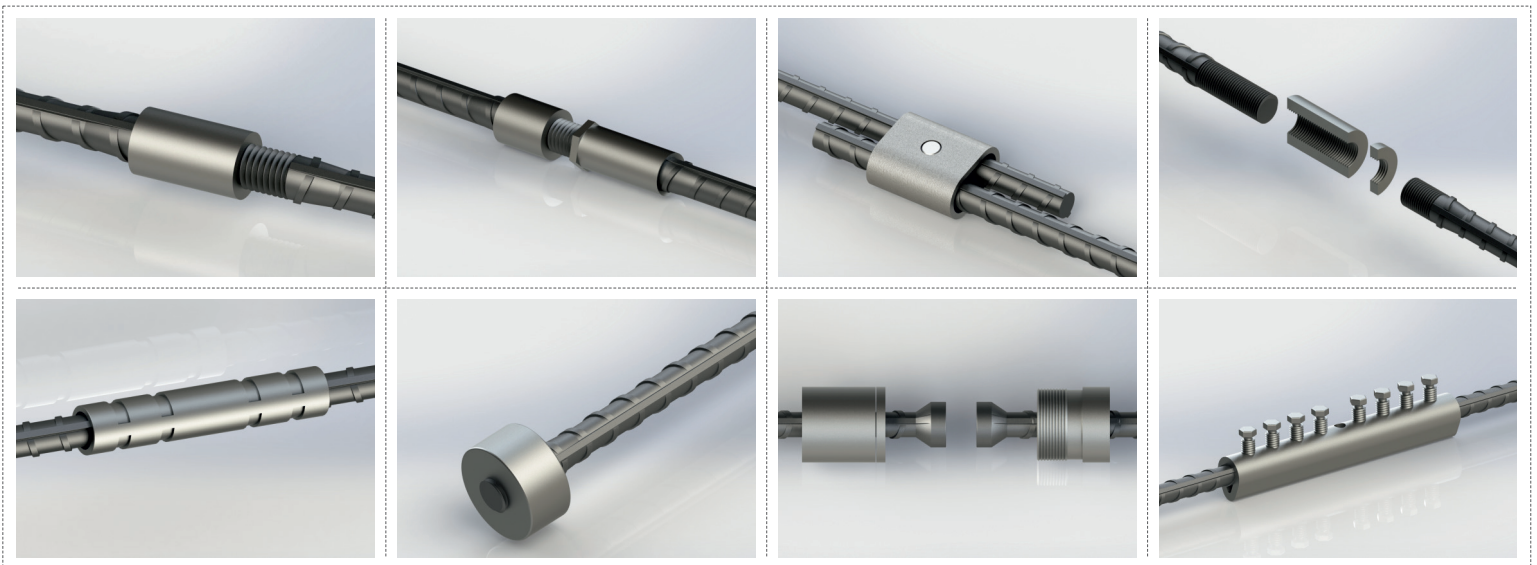


MECHANICAL REBAR COUPLER



REGBAR
CONSTRUCTION TECHNOLOGY SOLUTIONS

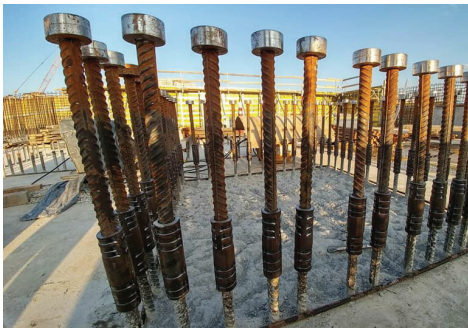
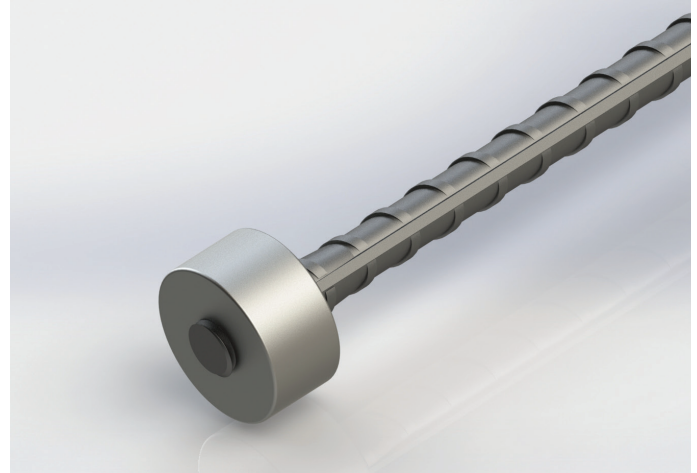
headCOUP

MECHANICAL REINFORCING BAR SPLICING SYSTEM

headCOUP Anchorage

Properties

- ▶ Meets or exceeds the requirements of major international building codes
- ▶ Eliminates rebar hook
- ▶ Upset Parallel Thread System eliminates losing of connection strength via slipping
- ▶ Minimizes development lengths
- ▶ Installs easily and fast
- ▶ Slim design reduces concrete cover
- ▶ Available in sizes 12 mm - 40 mm
- ▶ Allows simple visual inspection



Headcoup Anchorage is designed to create a sufficient hook in concrete based on shear cone theory. It offers an alternative way to create a simpler and more efficient anchorage of the rebar end than the traditional hooked rebar in the concrete. The front face of the coupler is designed to carry the full tension load of the rebar when the anchor is bearing against concrete or structural steel.

The anchorages are machined to have parallel threads inside which create a mechanical connection with reinforcing steel. Typical applications include ending of column bars(or shearwalls), ending of beams.

Headcoup anchorages are designed to meet or exceed major international building codes and Department of Transportation requirements, including:

BS8110	DIN 1045	Eurocode 2
UBC	IBC	ACI 318
AS3600	TS500	

HEADQUARTERS

Caferağa Mah. Albay Faik Sözdener Cad.
 No:7/23 Kadıköy - İstanbul - TURKEY
Phone: +90 216 405 21 55 pbx
E-mail: info@regbar.com

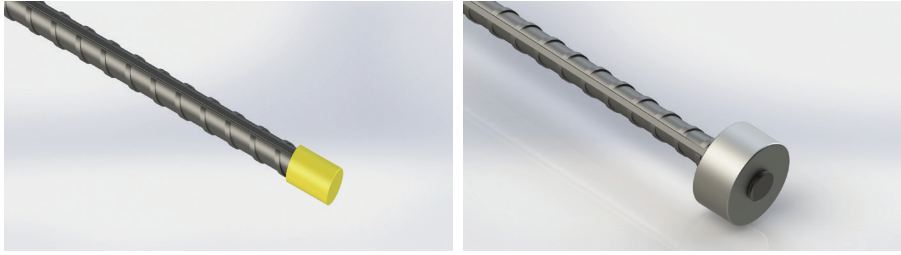
PLANT

Sanayi Mah. İzmit Sanayi Sitesi
 13. Cadde 318 Blok Apt. No: 318/132
 No:9 İzmit - Kocaeli - TURKEY
Mobile: +90 541 932 37 51

RUSSIA BRANCH

Lesnaya Plaza 4, 4th Lesnoy
 Pereulok No: 24/8 125047
 Moscow / RUSSIA

Simple Installation



1. Remove the protecting cap from the rebar. 2. Screw the Headcouple on the threaded bar.

Product Code	Bar Sizes			Outside Diameter (*)		Length		Unit Weight (*)	
	Metric [mm]	US	Canada	[mm]	["]	[mm]	["]	[kg]	[lb]
HDCP12	12	#4	10M	29	1-9/64	17	43/64	0.07	0.16
HDCP14	14	-	-	34	1-11/32	19	3/4	0.11	0.25
HDCP16	16	#5	15M	38	1-1/2	22	55/64	0.15	0.34
HDCP18	18	-	-	43	1-11/16	24	15/16	0.21	0.47
HDCP20	20	#6	20M	47	1-27/32	27	1-1/16	0.28	0.62
HDCP22	22	#7	-	52	2-3/64	28	1-7/64	0.35	0.78
HDCP26	26	#8	25M	59	2-21/64	32	1-17/64	0.52	1.15
HDCP28	28	#9	30M	64	2-33/64	35	1-3/8	0.66	1.46
HDCP30	30	-	-	69	2-23/32	37	1-29/64	0.81	1.79
HDCP32	32	#10	-	74	2-29/32	38	1-1/2	0.99	2.19
HDCP36	36	#11	35M	84	3-5/16	41	1-39/64	1.41	3.11
HDCP40	40	-	-	90	3-35/64	45	1-49/64	1.95	4.3

(*) Bar diameters and weights may vary by country.

NOTES

- Dimensions shown in chart are typical.
- It is recommended to lock the splices using a wrench. No specific torque needed.
- It is recommended to store away the thread protecting caps for reuse.
- Refer to the complete product installation instructions before starting the installation.

Regbar Construction
Technology



HEADQUARTERS

Caferağa Mah. Albay Faik Sözdener Cad.
No:7/23 Kadıköy - İstanbul - TURKEY
Phone: +90 216 405 21 55 pbx
E-mail: info@regbar.com

PLANT

Sanayi Mah. İzmit Sanayi Sitesi
13. Cadde 318 Blok Apt. No: 318/132
No:9 İzmit - Kocaeli - TURKEY
Mobile: +90 541 932 37 51

RUSSIA BRANCH

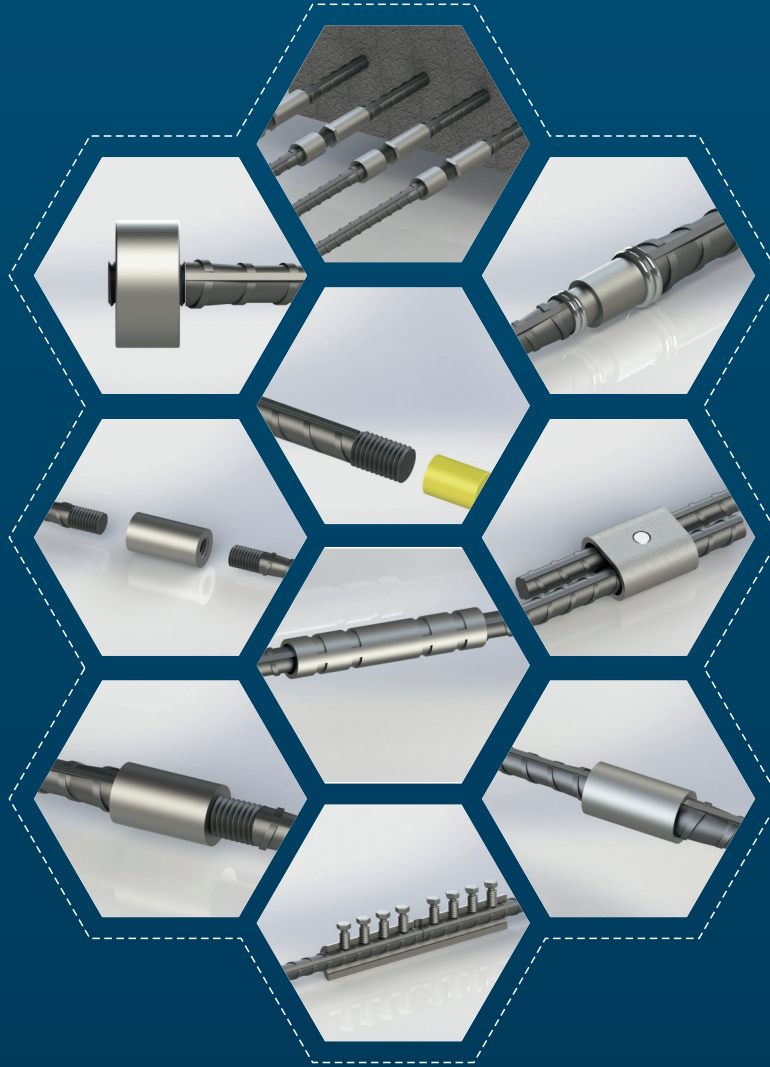
Lesnaya Plaza 4, 4th Lesnoy
Pereulok No: 24/8 125047
Moscow / RUSSIA





REGBAR

CONSTRUCTION TECHNOLOGY SOLUTIONS



www.regbar.com
info@regbar.com

HEADQUARTERS

Caferağa Mah. Albay Faik Sözdener Cad.
No:7/23 Kadıköy - İstanbul - TURKEY
Phone: +90 216 405 21 55 pbx
E-mail: info@regbar.com

PLANT

Sanayi Mah. İzmit Sanayi Sitesi
13. Cadde 318 Blok Apt. No: 318/132
No:9 İzmit - Kocaeli - TURKEY
Mobile: +90 541 932 37 51

RUSSIA BRANCH

Lesnaya Plaza 4, 4th Lesnoy
Pereulok No: 24/8 125047
Moscow / RUSSIA