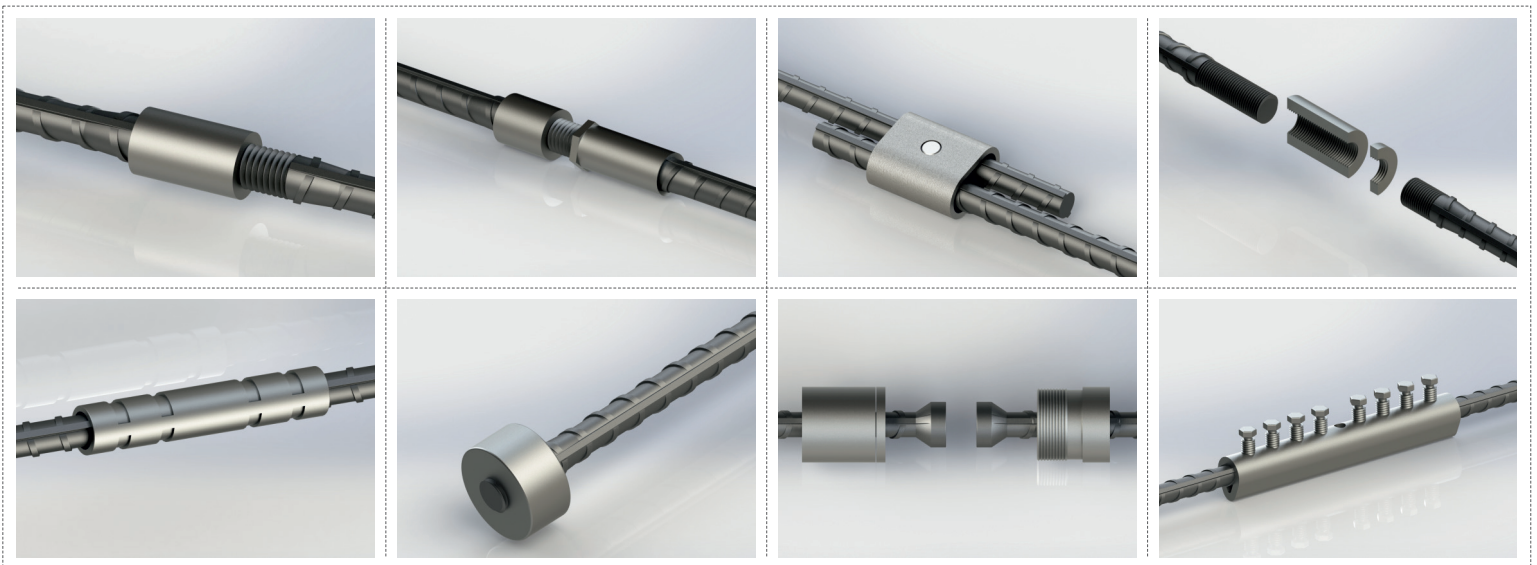


# MECHANICAL REBAR COUPLER



**REGBAR**  
CONSTRUCTION TECHNOLOGY SOLUTIONS

***bridgeCOUP***

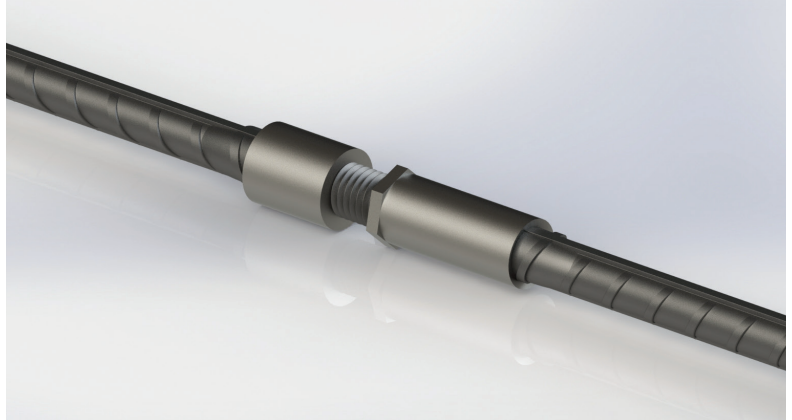
[www.regbar.com](http://www.regbar.com) / [info@regbar.com](mailto:info@regbar.com)

## MECHANICAL REINFORCING BAR SPLICING SYSTEM

### bridgeCOUP Coupler

#### Properties

- Meets or exceeds the requirements of major international building codes
- A wide range of international rebar grades and deformation patterns can be used
- Upset Parallel Thread System eliminates losing of connection strength via slipping
- Installs easily and fast
- Slim design reduces concrete cover
- Available in sizes 12 mm - 40 mm
- Allows simple visual inspection



BridgeCoup splices are widely used in cages manufacturing. When the bars cannot be brought butt to butt (as it happens often in cages manufacturing), BridgeCoup Caging splices can be used. Both bars are threaded with a standard upset parallel thread, and a BridgeCoup Set is used to connect them. This set is constituted of three pieces preassembled together: a caging stud, a long caging coupler and a lock-nut. The end of the caging stud bears a female thread that fits on one bar (Preferably the top bar in case of vertical cages).

BridgeCoup couplers are designed to meet or exceed major international building codes including:

AASHTO	ACI 349	IBC Type 1 (125% Specified Yield)	NF A 35-020-1
ABNT NBR 8548:1984	ACI 359	IBC Type 2 (Specified Ultimate)	NF EN 1992-1-1
ACI 318 Type 1 (125% Specified Yield)	AS3600	ISO 15835	Turkish Seismic Code 2018
ACI 318 Type 2 (Specified Ultimate)	Eurocode 2	GOST 34278	US Army Corps of Engineers

#### HEADQUARTERS

Caferağa Mah. Albay Faik Sözdener Cad.  
No:7/23 Kadıköy - İstanbul - TURKEY  
**Phone:** +90 216 405 21 55 pbx  
**E-mail:** info@regbar.com

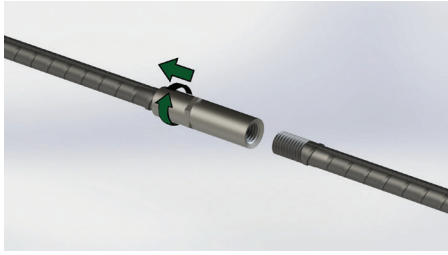
#### PLANT

Sanayi Mah. İzmit Sanayi Sitesi  
13. Cadde 318 Blok Apt. No: 318/132  
No:9 İzmit - Kocaeli - TURKEY  
**Mobile:** +90 541 932 37 51

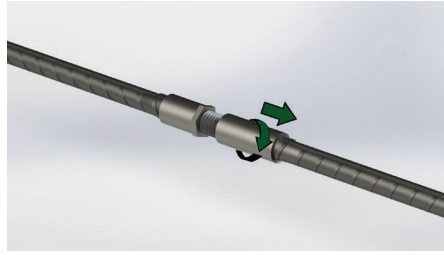
#### RUSSIA BRANCH

Lesnaya Plaza 4, 4th Lesnoy  
Pereulok No: 24/8 125047  
Moscow / RUSSIA

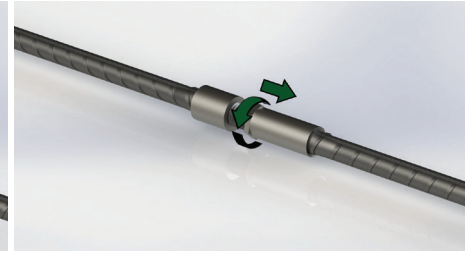
## Simple Installation



1. Screw the bridging set onto the bar.



2. Screw the bridging coupler out of the female bridging assembly set and onto the other bar.



3. Screw the nut out of the female bridging assembly set.

Product Code	Bar Sizes			Outside Diameter (*)		Length		Unit Weight (*)	
	Metric [mm]	US	Canada	[mm]	[ " ]	[mm]	[ " ]	[kg]	[lb]
BGCP12	12	#4	10M	19	3/4	77	3-1/32	0.11	0.25
BGCP14	14	-	-	24	15/16	90	3-35/64	0.2	0.45
BGCP16	16	#5	15M	29	1-9/64	103	4-1/16	0.31	0.69
BGCP18	18	-	-	34	1-11/32	116	4-9/16	0.49	1.09
BGCP20	20	#6	20M	34	1-11/32	132	5-13/64	0.54	1.2
BGCP22	22	#7	-	39	1-17/32	143	5-5/8	0.7	1.55
BGCP26	26	#8	25M	39	1-17/32	164	6-29/64	0.73	1.61
BGCP28	28	#9	30M	44	1-47/64	183	7-13/64	1.14	2.52
BGCP30	30	-	-	49	1-59/64	191	7-33/64	1.56	3.44
BGCP32	32	#10	-	49	1-59/64	199	7-53/64	1.61	3.55
BGCP36	36	#11	35M	54	2-1/8	225	8-55/64	2.15	4.74
BGCP40	40	-	-	59	2-21/64	247	9-23/32	2.5	5.52

(\*) Bar diameters and weights may vary by country.

### NOTES

- Dimensions shown in chart are typical.
- It is recommended to lock the splices using a wrench. No specific torque needed.
- It is recommended to store away the thread protecting caps for reuse.
- Refer to the complete product installation instructions before starting the installation.

Regbar Construction  
Technology



#### HEADQUARTERS

Caferağa Mah. Albay Faik Sözdener Cad.  
No:7/23 Kadıköy - İstanbul - TURKEY  
Phone: +90 216 405 21 55 pbx  
E-mail: info@regbar.com

#### PLANT

Sanayi Mah. İzmit Sanayi Sitesi  
13. Cadde 318 Blok Apt. No: 318/132  
No:9 İzmit - Kocaeli - TURKEY  
Mobile: +90 541 932 37 51

#### RUSSIA BRANCH

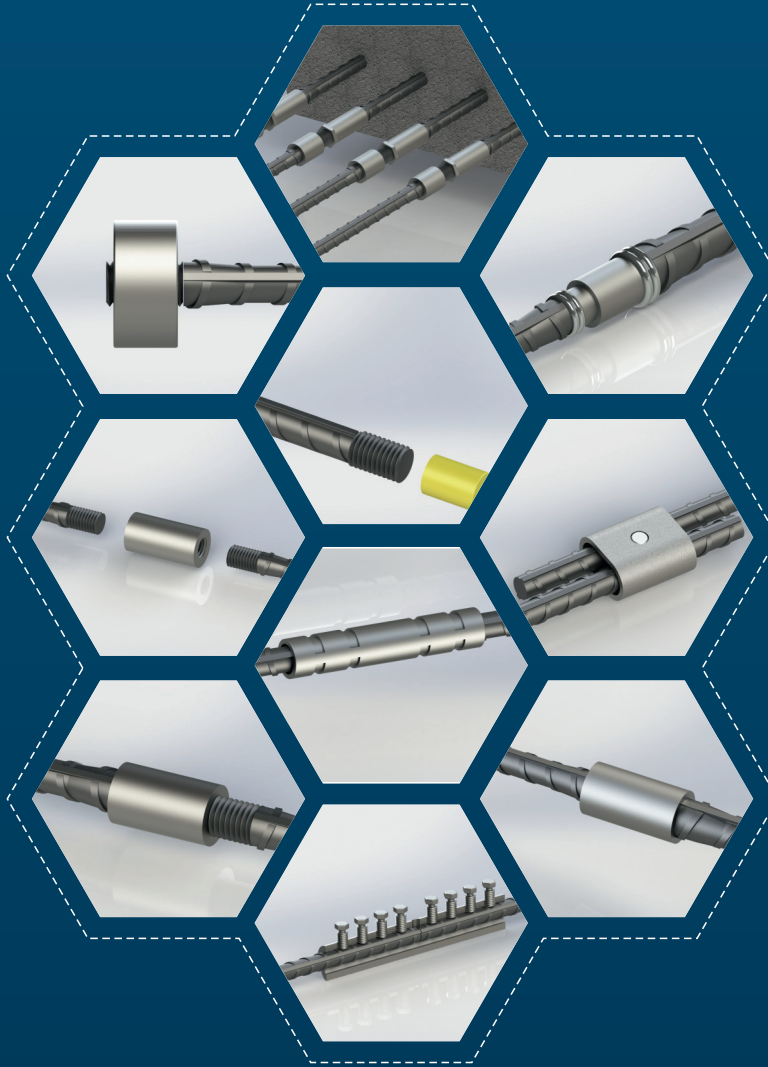
Lesnaya Plaza 4, 4th Lesnoy  
Pereulok No: 24/8 125047  
Moscow / RUSSIA





# REGBAR

CONSTRUCTION TECHNOLOGY SOLUTIONS



[www.regbar.com](http://www.regbar.com)  
[info@regbar.com](mailto:info@regbar.com)

#### HEADQUARTERS

Caferağa Mah. Albay Faik Sözdener Cad.  
No:7/23 Kadıköy - İstanbul - TURKEY  
**Phone:** +90 216 405 21 55 pbx  
**E-mail:** [info@regbar.com](mailto:info@regbar.com)

#### PLANT

Sanayi Mah. İzmit Sanayi Sitesi  
13. Cadde 318 Blok Apt. No: 318/132  
No:9 İzmit - Kocaeli - TURKEY  
**Mobile:** +90 541 932 37 51

#### RUSSIA BRANCH

Lesnaya Plaza 4, 4th Lesnoy  
Pereulok No: 24/8 125047  
Moscow / RUSSIA