

GROUND EQUIPMENT



REGBAR
CONSTRUCTION TECHNOLOGY SOLUTIONS

PLASTIC SPACERS ELEMENTS

GROUND EQUIPMENT

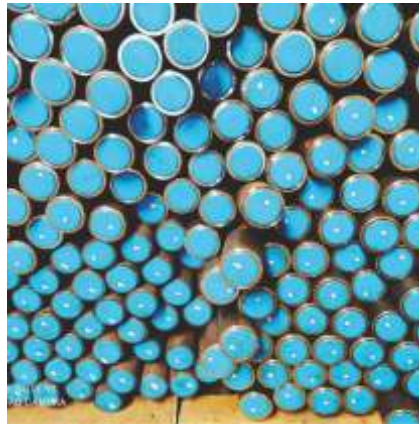
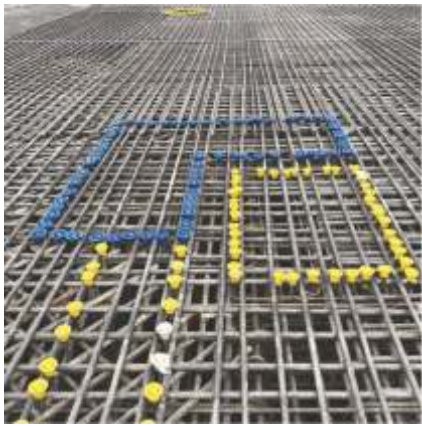
PLASTIC SPACERS ELEMENTS

PLASTIC SPACERS ELEMENTS / PLASTIC PROTECTIVE CAPS

Concrete Caps;

They are designed not to lose zero-zero connection end of the element embedded in concrete especially in subway and topdown projects. Following the concrete casting with this system added to zero rebar end, taper tap is removed and a better connection is ensured with frontal opening.

Corrugated Pipe is made of corrosion-resistant plastic raw material. Despite its light weight, it has a shock-absorbing property.



Rebar Caps

Rebar caps are produced in order to prevent corrosion of the rebars after concrete casting in the field, in the stock area or damages of thread profiles. Each diameter is coded with a separate color code.

Anchorage Spacers

Anchorage Spacers do not interfere with the flow of injection material during the injection of the soil. It holds the anchor parts in one piece and protects product integrity.

Anchorage Connectors are designed with porous eyes as Anchorage Spacers so they don't prevent the flow of injection.

Anchorage Pipe Caps

They are designed to be attached to starting and ending points of anchorage pipes. They prevent possible deformation of the material with its impermeability.



HEADQUARTERS

Caferağa Mah. Albay Faik Sözdener Cad.
No:7/23 Kadıköy - İstanbul - TURKEY
Phone: +90 216 405 21 55 pbx
E-mail: info@regbar.com

PLANT

Sanayi Mah. İzmit Sanayi Sitesi
13. Cadde 318 Blok Apt. No: 318/132
No:9 İzmit - Kocaeli - TURKEY
Mobile: +90 541 932 37 51

RUSSIA BRANCH

Lesnaya Plaza 4, 4th Lesnoy
Pereulok No: 24/8 125047
Moscow / RUSSIA



Rock Bolt Spacer

They regularly tighten the anchorage elements and keep them together due to their structure which doesn't prevent flow of the injection material in soil anchorages but they also separate them from each other and allow the injection cover every element. Thus they increase the adherence. These pieces increase adherence especially in rehabilitation of soil rock bolts.



What is Antirust Margin ?

Antirust Margin is technically defined as "the thickness measured up to the end of the concrete outside the most outer reinforcement inside a concrete element". We can talk about many reasons that cause corrosion in the reinforced concrete rebars. Risk of corrosion increases due to the environment especially in projects close to marinas, dams and sea. In order to make the concrete and iron work properly on the same axis, Antirust Margin pieces take on an important task to protect irons from external effects, ensure desired rebar density and full protection against corrosion.

Heavy Floor Antirust Margin

It is a footed system antirust margin which ensures the antirust margin range in horizontal iron reinforcements in the foundations. These plastic equipment can be easily used in heavy iron equipment.

Profile Type Plastic Antirust Margin

Rail type mesh floor antirust margin is preferred for large area flooring works and paneled wire mesh as it provides great convenience and facilitates the process. The upper hook is designed to carry iron. It can be conveniently used in horizontal and vertical flooring. It can be extended by attaching them to each other with the mounting apparatus at the ends.



HEADQUARTERS

Caferağa Mah. Albay Faik Sözdener Cad.
No:7/23 Kadıköy - İstanbul - TURKEY
Phone: +90 216 405 21 55 pbx
E-mail: info@regbar.com

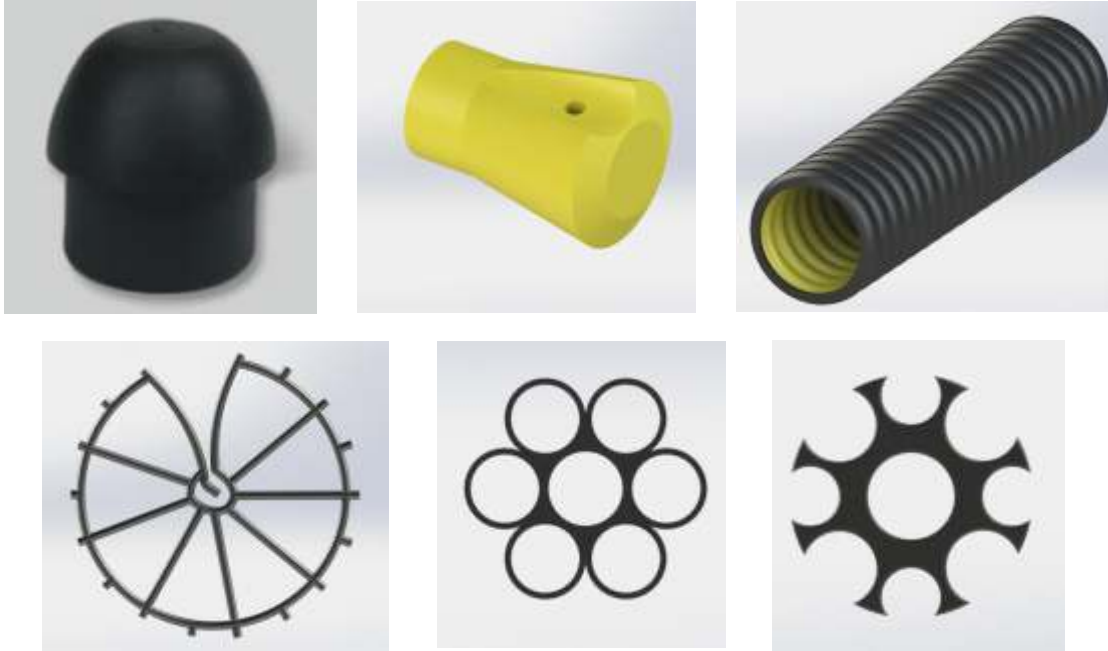
PLANT

Sanayi Mah. İzmit Sanayi Sitesi
13. Cadde 318 Blok Apt. No: 318/132
No:9 İzmit - Kocaeli - TURKEY
Mobile: +90 541 932 37 51

RUSSIA BRANCH

Lesnaya Plaza 4, 4th Lesnoy
Pereulok No: 24/8 125047
Moscow / RUSSIA





Circular Type Plastic Antirust Margin

This type of antirust margin provides great convenience when used in wide area flooring and steel mesh, easily grips simple iron by two iron grip bulges at the top. They are laid on the surface at proper intervals.

Curtain and Column Type Antirust Margin

Ideal for use in curtain and column iron molds. They are produced in sizes suitable for iron in different diameters. Their coupling feet enable them to grip irons with different diameters. Their porous structure doesn't prevent concrete transition and form voids in the concrete. When they are attached to stirrups, they provide the desired gap between the mold and reinforcement to obtain optimum efficiency. They are manufactured in different heights in accordance with irons in different diameters.

Concrete Spacer

Concrete Spacers are used without wires in spring applications, and in vertical applications by connecting to the reinforcement steel through the hole in the middle with a binding wire.



HEADQUARTERS
Caferağa Mah. Albay Faik Sözdener Cad.
No:7/23 Kadıköy - İstanbul - TURKEY
Phone: +90 216 405 21 55 pbx
E-mail: info@regbar.com

PLANT
Sanayi Mah. İzmit Sanayi Sitesi
13. Cadde 318 Blok Apt. No: 318/132
No:9 İzmit - Kocaeli - TURKEY
Mobile: +90 541 932 37 51

RUSSIA BRANCH
Lesnaya Plaza 4, 4th Lesnoy
Pereulok No: 24/8 125047
Moscow / RUSSIA





REGBAR

CONSTRUCTION TECHNOLOGY SOLUTIONS



www.regbar.com

info@regbar.com

HEADQUARTERS

Caferağa Mah. Albay Faik Sözdener Cad.
No:7/23 Kadıköy - İstanbul - TURKEY

Phone: +90 216 405 21 55 pbx

E-mail: info@regbar.com

PLANT

Sanayi Mah. İzmit Sanayi Sitesi
13. Cadde 318 Blok Apt. No: 318/132

No:9 İzmit - Kocaeli - TURKEY

Mobile: +90 541 932 37 51

RUSSIA BRANCH

Lesnaya Plaza 4, 4th Lesnoy
Pereulok No: 24/8 125047

Moscow / RUSSIA