

GROUND EQUIPMENT



REGBAR
CONSTRUCTION TECHNOLOGY SOLUTIONS

PRE TENSION

GROUND EQUIPMENT

PRE TENSION

PROPERTIES

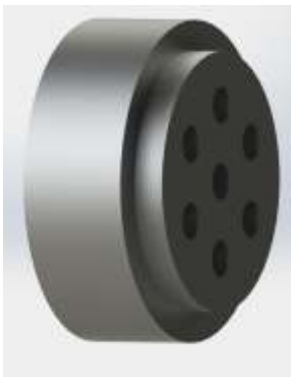
Prestressed Anchorage Systems

The self-drilling anchor bolt device (also known as Threaded Hollow Bars) makes your job much easier, as it is capable of performing procedures of drilling, anchoring and injection all at once. There is a hollow interior of the self-drilling anchor bolt, a threaded exterior and a drill bit that is used for drilling. The self-drilling anchor bolt's hollow interior enables air and water to freely move through the drilling process, flushing the particles. After completion of the drilling process, it also enables immediate injection. For fractured or hard rock formations as well as uneven ground conditions (such as gravel, soft, clay and non-homogeneous soil), self-drilling anchor bolts present a specific bolting solution.



Anchorage Heads

Regbar Multi-String Prestressed Systems, have been used for years in the construction of bridges, buildings, tanks and many other structures that require engineering reinforcement and support elements. Regbar provides Design and Development, Engineering, Production and Supply Installation, Technical Training, Installation Supervision, Inspection or Maintenance services for Prestressing Systems. **Regbar Pre Stressing Systems** are known for its superior load bearing performance, durability and simple design. **Regbar Pre Stressing Systems** significantly contributes to long life of structures by virtue of its high-quality corrosion protection methods. **They are used on slopes such as Regbar Anchor and Pile Systems** and related product lines and for geotechnical applications as excavation stabilization in a wide range.



The anchorage cover / head used in the pre-stressing anchorages; this part which works with this head plate enables to transfer the pre-stressing force into the sheathing surface.

HEADQUARTERS

Caferağa Mah. Albay Faik Sözdener Cad.
No:7/23 Kadıköy - İstanbul - TURKEY
Phone: +90 216 405 21 55 pbx
E-mail: info@regbar.com

PLANT

Sanayi Mah. İzmit Sanayi Sitesi
13. Cadde 318 Blok Apt. No: 318/132
No:9 İzmit - Kocaeli - TURKEY
Mobile: +90 541 932 37 51

RUSSIA BRANCH

Lesnaya Plaza 4, 4th Lesnoy
Pereulok No: 24/8 125047
Moscow / RUSSIA



Anchor Grips

Diameter and number of the tendon materials, dimensions of load distribution plate, diameter of anchor head and number of holes, number of anchor grips are calculated according to the anchor loads depending on the project. **Regbar anchor heads** are available in all sizes and diameters in our stocks.

Anchor heads and grips are designed according to types and number of spiral steel ropes that form the tendon. Threaded grip clamps-grips are used to fasten the anchor tendons to head plate.



The diameter and number of tendon material, the size of load distribution plate, the diameter and hole number of anchorage head, the number of anchorage wedges are calculated according to the anchorage loads in accordance with the project. You can supply the anchorage heads in Regbar brand in any height and diameter from our stocks. The anchorage heads and grips are designed according to the type and number of spiral steel ropes which make tendon. The grip clamps-wedges (grip) are used to fix the cover plates of the anchorage tendon.

Anchor Head Type	Diameter	Head Length	Plate	Grip Type	Angle	Hole
Product Code	A [mm]	H [mm]	a x t x d [mm]	Inches	Degrees °	Number
RGPT 0,5 " x 3	90-110	40-50		0,5 "	15-30 °	3
RGPT 0,6 " x 3	90-110	40-50		0,6 "	15-30 °	3
RGPT 0,5 " x 4	90-110	40-50		0,5 "	15-30 °	4
RGPT 0,6 " x 4	90-110	40-50	200 x 200 x 10	0,6 "	15-30 °	4
RGPT 0,5 " x 5	90-120	40-50	200 x 200 x 12	0,5 "	15-30 °	5
RGPT 0,6 " x 5	90-120	40-50	200 x 200 x 15	0,6 "	15-30 °	5
RGPT 0,5 " x 6	100-150	40-50	200 x 200 x 20	0,5 "	15-30 °	6
RGPT 0,6 " x 6	100-150	40-50	200 x 200 x 25	0,6 "	15-30 °	6
RGPT 0,5 " x 7	120-150	40-50	200 x 200 x 30	0,5 "	15-30 °	7
RGPT 0,6 " x 7	120-150	40-50	250 x 250 x 20	0,6 "	15-30 °	7
RGPT 0,5 " x 8	120-150	40-50	250 x 250 x 25	0,5 "	15-30 °	8
RGPT 0,6 " x 8	120-150	40-50	250 x 250 x 30	0,6 "	15-30 °	8
RGPT 0,5 " x 9	130-160	50-70	300 x 300 x 20	0,5 "	15-30 °	9
RGPT 0,6 " x 9	130-160	50-70	300 x 300 x 25	0,6 "	15-30 °	9
RGPT 0,5 " x 10	130-160	50-70	300 x 300 x 30	0,5 "	15-30 °	10
RGPT 0,6 " x 10	130-160	50-70		0,6 "	15-30 °	10
RGPT 0,5 " x 11	150-170	50-70		0,5 "	15-30 °	11
RGPT 0,6 " x 11	150-170	50-70		0,6 "	15-30 °	11
RGPT 0,5 " x 12	150-170	50-70		0,5 "	15-30 °	12
RGPT 0,6 " x 12	150-170	50-70		0,6 "	15-30 °	12

Regbar Construction
Technology



HEADQUARTERS

Caferağa Mah. Albay Faik Sözdener Cad.
No:7/23 Kadıköy - İstanbul - TURKEY
Phone: +90 216 405 21 55 pbx
E-mail: info@regbar.com

PLANT

Sanayi Mah. İzmit Sanayi Sitesi
13. Cadde 318 Blok Apt. No: 318/132
No:9 İzmit - Kocaeli - TURKEY
Mobile: +90 541 932 37 51

RUSSIA BRANCH

Lesnaya Plaza 4, 4th Lesnoy
Pereulok No: 24/8 125047
Moscow / RUSSIA



Anchorage Plates

Regbar produces plates in desired dimensions in line with the measurements and demands in the project. **Regbar Anchorage Plates** can be prepared as special production according to demand and need in addition to standard holes. In addition, the plates can be made of stainless steel on request for projects that are sensitive to corrosion. For protection of plates and threads, Regbar recommends protective hats suitable for your project.

Protective Accessories

They are protective accessories to protect the threads and delivered products and to take measure against rusting. It is placed in the center of the stud and prevents the product from sliding.



Regbar manufactures the plates in requested sizes according the measurements and demands in the projects. Regbar anchorage plates may be prepared in accordance with the demands and needs as a special production as well as the standard drilled holes. In addition, the plates may be manufactured from the stainless steel according to the demands for the projects including the sensitivity to corrosion. Regbar suggest the protective caps appropriate for your Project to protect the plates and grips.

Tensioning Anchors

Pre Tension tensioning anchors help to anchor and stretch the ropes. These are designed according to the principle of anchoring each rope individually by means of compressors.

The prestressing force is transferred to concrete by a rigid anchor plate. The spirals surround too much concrete in the zone behind the anchor plate. The tensile forces in the anchor zone should be met with an additional soft reinforcement

The reinforcement is determined by considering the shape and dimensions of the anchor plate as well as the dimensions of the end region. Stretching anchors can also be used as fixed anchors. In this case, the anchor head must remain stable during the tensioning process.



HEADQUARTERS

Caferağa Mah. Albay Faik Sözdener Cad.
No:7/23 Kadıköy - İstanbul - TURKEY
Phone: +90 216 405 21 55 pbx
E-mail: info@regbar.com

PLANT

Sanayi Mah. İzmit Sanayi Sitesi
13. Cadde 318 Blok Apt. No: 318/132
No:9 İzmit - Kocaeli - TURKEY
Mobile: +90 541 932 37 51

RUSSIA BRANCH

Lesnaya Plaza 4, 4th Lesnoy
Pereulok No: 24/8 125047
Moscow / RUSSIA





REGBAR

CONSTRUCTION TECHNOLOGY SOLUTIONS



www.regbar.com

info@regbar.com

HEADQUARTERS

Caferağa Mah. Albay Faik Sözdener Cad.
No:7/23 Kadıköy - İstanbul - TURKEY

Phone: +90 216 405 21 55 pbx

E-mail: info@regbar.com

PLANT

Sanayi Mah. İzmit Sanayi Sitesi
13. Cadde 318 Blok Apt. No: 318/132

No:9 İzmit - Kocaeli - TURKEY

Mobile: +90 541 932 37 51

RUSSIA BRANCH

Lesnaya Plaza 4, 4th Lesnoy
Pereulok No: 24/8 125047

Moscow / RUSSIA