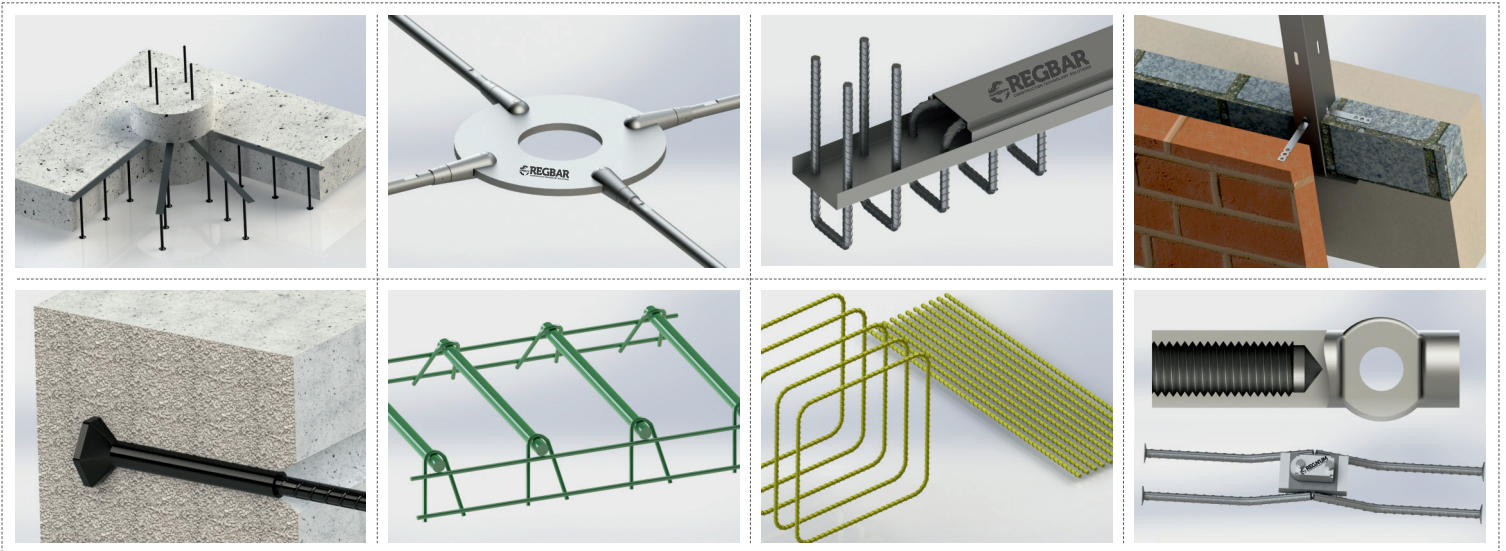


CONSTRUCTION TECHNOLOGY



REGBAR
CONSTRUCTION TECHNOLOGY SOLUTIONS

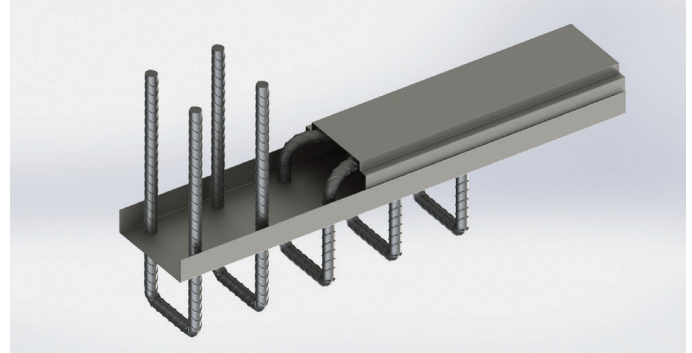
REBEND CONNECTION

CONSTRUCTION TECHNOLOGY

REBEND CONNECTION

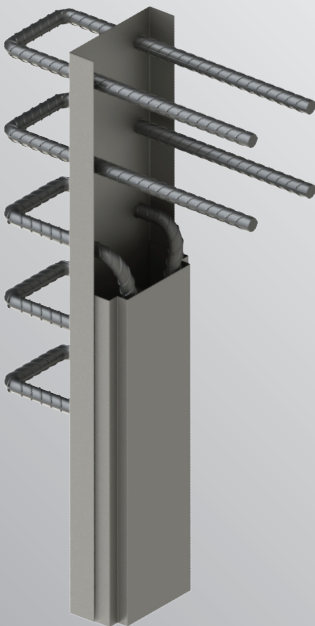
Properties

- ▶ Simplify formwork on concrete working joints
- ▶ The formwork does not need to be pierced
- ▶ Reliable connection between joints
- ▶ Custom production in a short time



Regbar Rebend Connection system is used for effective connection of the concrete pieces which are poured and connected in different phases. The cover can be taken out of the body, thus it is manufactured from the galvanized sheet with the in-advanced drilled clutch holes and the protection system.

The product can be mounted to formwork only by nailing or fixing with an additional binding wire.



Use of the **Regbar Rebend Connection** system provides many advantages over conventional joint construction, including the simplifying formwork design and removing the need to drill shuttering.

As the bars stay in the casing until necessary, they are protected, minimizing the danger of injury from projecting bars. Easy to use, for installation, the system needs little on-site training.

The **Regbar Rebend Connection** system is potentially suitable for use in any construction joint in concrete, but the most commonly found applications include floor slabs, walls, stairwells, corbels diaphragm walls, jumpforms and brick support ledges.

There is a standard range of products for the most common mounting situations with 0.8 m and 1.25 m body lengths and the single and double-layer connection.

HEADQUARTERS

Caferağa Mah. Albay Faik Sözdener Cad.
No:7/23 Kadıköy - İstanbul - TURKEY
Phone: +90 216 405 21 55 pbx
E-mail: info@regbar.com

PLANT

Sanayi Mah. İzmit Sanayi Sitesi
13. Cadde 318 Blok Apt. No: 318/132
No:9 İzmit - Kocaeli - TURKEY
Mobile: +90 541 932 37 51

RUSSIA BRANCH

Lesnaya Plaza 4, 4th Lesnoy
Pereulok No: 24/8 125047
Moscow / RUSSIA

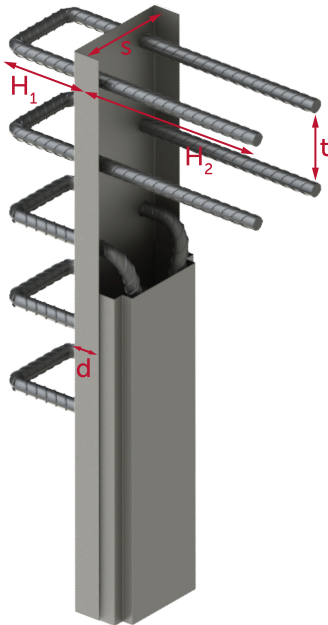


Simple Installation

- 1** Nail the Rebind Connection through the casing to the formwork or alternatively securely tie the projecting anchorage reinforcing bars back to the main reinforcement. In both cases the Rebind Connection box should be securely fixed to avoid displacement during concreting. The casing should be tight against the formwork. Pour concrete.
- 2** After concrete hardening, strike the formwork to reveal the cover. Remove the cover to expose the pre-bent bars.
- 3** Straighten the bars using the re-bending tool for the size of bar. The bars should be straightened only once. To avoid damage to adjacent concrete, it is prudent to allow a concrete curing period of seven days.
- 4** Once the bars are straightened and aligned they are ready for lapping with the concrete element reinforcement.



Dimensions



Regbar produces various types of Rebind Connection System according to your needs. Some types mentioned in the table below are in-stock products and available at short notice depending on the quantity ordered.

The delivery time for the other standard products is 2 to 5 work days (depending on the quantity, larger quantities on enquiry).

Regbar Construction
Technology



HEADQUARTERS

Caferağa Mah. Albay Faik Sözdener Cad.
No:7/23 Kadıköy - İstanbul - TURKEY
Phone: +90 216 405 21 55 pbx
E-mail: info@regbar.com

PLANT

Sanayi Mah. İzmit Sanayi Sitesi
13. Cadde 318 Blok Apt. No: 318/132
No:9 İzmit - Kocaeli - TURKEY
Mobile: +90 541 932 37 51

RUSSIA BRANCH

Lesnaya Plaza 4, 4th Lesnoy
Pereulok No: 24/8 125047
Moscow / RUSSIA

Product Code	For wall thickness from	Case Width	Steel Diameter	Stirrup Width	Overlap Length	Stirrup Spacing	Case Height	Weight of Piece
	[cm]	s [cm]	Ø [metric]	m [mm]	H ₂ [mm]	t [mm]	[m]	[kg/pce.]
RBC0815	13	9	8	7	26	15	1.25	4.68
RBC1015	13	9	10	7	30	15	1.25	6.78
RBC0815	16-18	12	8	10	26	15	1.25	5.12
RBC0820	16-18	12	8	10	26	20	1.25	4.35
RBC1015	16-18	12	10	10	30	15	1.25	7.18
RBC1020	16-18	12	10	10	30	20	1.25	5.8
RBC1215	16-18	12	12	10	39	15	1.25	10.89
RBC1220	16-18	12	12	10	39	20	1.25	8.58
RBC0815	18-20	15	8	12	26	15	1.25	5.16
RBC820	18-20	15	8	12	26	20	1.25	4.37
RBC1015	18-20	15	10	12	30	15	1.25	7.7
RBC1020	18-20	15	10	12	30	20	1.25	6.27
RBC1215	18-20	15	12	12	39	15	1.25	11.55
RBC1220	18-20	15	12	12	39	20	1.25	7.08
RBC0815	23-26	19	8	17	26	15	1.25	5.34
RBC1010	23-26	19	10	17	30	10	1.25	10.82
RBC1015	23-26	19	10	17	30	15	1.25	7.89
RBC1020	23-26	19	10	17	30	20	1.25	6.42
RBC1210	23-26	19	12	17	39	10	1.25	17.48
RBC1215	23-26	19	12	17	39	15	1.25	12.52
RBC1220	23-26	19	12	17	39	20	1.25	10.09
RBC0815	26-29	22	8	20	26	15	1.25	6.21
RBC1010	26-29	22	10	20	30	10	1.25	12.03
RBC1015	26-29	22	10	20	30	15	1.25	8.89
RBC1210	26-29	22	12	20	39	10	1.25	18.02
RBC1215	26-29	22	12	20	39	15	1.25	12.95
RBC1220	26-29	22	12	20	39	20	1.25	10.41
RBC1010	29	25	10	23	30	10	1.25	12.54
RBC1015	29	25	10	23	30	15	1.25	9.32
RBC1210	29	25	12	23	39	10	1.25	18.72
RBC1215	29	25	12	23	39	15	1.25	13.54
RBC1220	29	25	12	23	39	20	1.25	10.85

HEADQUARTERS

Caferağa Mah. Albay Faik Sözdener Cad.
 No:7/23 Kadıköy - İstanbul - TURKEY
Phone: +90 216 405 21 55 pbx
E-mail: info@regbar.com

PLANT

Sanayi Mah. İzmit Sanayi Sitesi
 13. Cadde 318 Blok Apt. No: 318/132
 No:9 İzmit - Kocaeli - TURKEY
Mobile: +90 541 932 37 51

RUSSIA BRANCH

Lesnaya Plaza 4, 4th Lesnoy
 Pereulok No: 24/8 125047
 Moscow / RUSSIA





REGBAR

CONSTRUCTION TECHNOLOGY SOLUTIONS



www.regbar.com

info@regbar.com

HEADQUARTERS

Caferağa Mah. Albay Faik Sözdener Cad.
No:7/23 Kadıköy - İstanbul - TURKEY

Phone: +90 216 405 21 55 pbx

E-mail: info@regbar.com

PLANT

Sanayi Mah. İzmit Sanayi Sitesi
13. Cadde 318 Blok Apt. No: 318/132
No:9 İzmit - Kocaeli - TURKEY

Mobile: +90 541 932 37 51

RUSSIA BRANCH

Lesnaya Plaza 4, 4th Lesnoy
Pereulok No: 24/8 125047
Moscow / RUSSIA