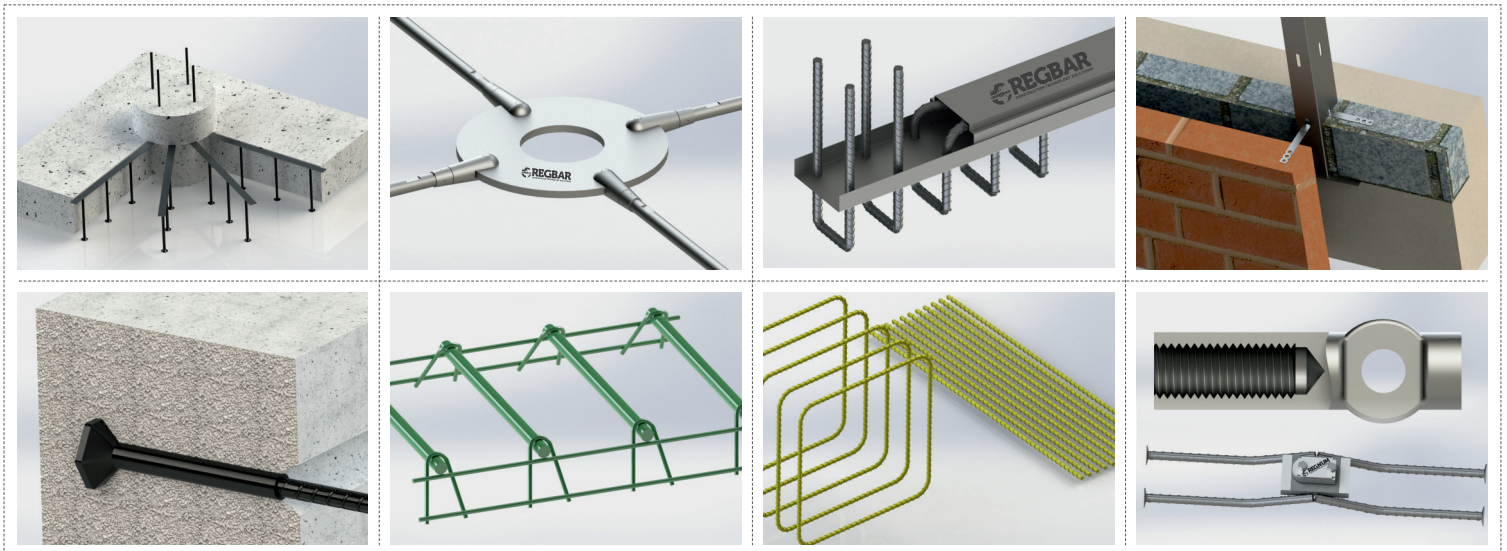


# CONSTRUCTION TECHNOLOGY



**REGBAR**  
CONSTRUCTION TECHNOLOGY SOLUTIONS

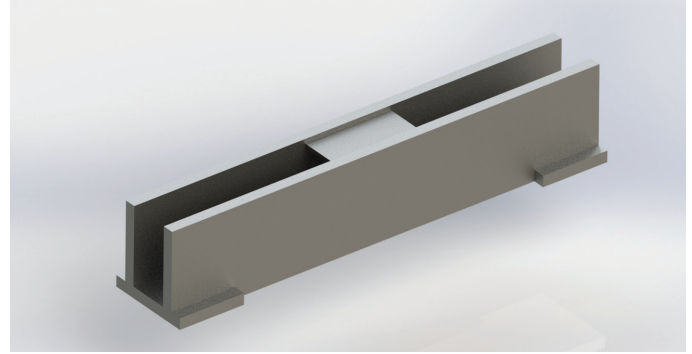
**PRECAST**

# CONSTRUCTION TECHNOLOGY

## PRECAST

### Precast Solutions

**Regbar** offers precast solutions for you projects. Upon beginning of the manufacturing of prefabricated projects and according to availability of molds, manufacturing is planned by taking the completion time of the work in to consideration. In accordance with this schedule, mold modifications are made according to manufacturing projects.



Quality staff controls the molds to ensure that they are made according to the requirements of the project. If appropriate, the process begins upon approval of the mold. If it is not, the required operation is performed.

During this process, iron reinforcements are prepared according to the product projects. After they are placed in the mold, necessary anchors and embedded elements are checked. Following the approval of reinforcement, concrete samples are taken during concrete casting to maintain the quality control of the concrete.

Upon completion of concrete casting, the concrete is covered after a while and curing begins. After reaching the desired strength, the necessary quality control and durability tests are carried out and they are moved to the project area or storage area.

Precast elements are listed such as;

- ▶ **Regbar Superstructure Elements**  
(Roof Truss, Purlin Beam, Gutter Beam, Column, Ridge Piece, Crane Beam, Floor Beams, Paving Slabs)
- ▶ **Regbar Facade Elements**  
(Concrete Facade Linings, Roof Parapets, TT Facade Panel)
- ▶ **Regbar Bridge Beams and Tunnel Segments**  
(Prestressed Bridge Beams, Prefabricated Tunnel Segments, Concrete Traverse, Box Culvert, Underpass Elements)
- ▶ **Regbar Infrastructure and Environment Elements**  
(Prefabricated Foundation, Retaining Walls, Garden Walls)
- ▶ **Regbar Concrete Prefabricated Systems:**  
Reliable connection of concrete facades and safety for challenging facades.

#### HEADQUARTERS

Caferağa Mah. Albay Faik Sözdener Cad.  
No:7/23 Kadıköy - İstanbul - TURKEY  
**Phone:** +90 216 405 21 55 pbx  
**E-mail:** info@regbar.com

#### PLANT

Sanayi Mah. İzmit Sanayi Sitesi  
13. Cadde 318 Blok Apt. No: 318/132  
No:9 İzmit - Kocaeli - TURKEY  
**Mobile:** +90 541 932 37 51

#### RUSSIA BRANCH

Lesnaya Plaza 4, 4th Lesnoy  
Pereulok No: 24/8 125047  
Moscow / RUSSIA

## ASSEMBLY

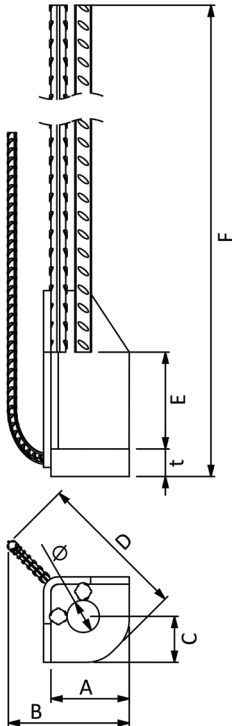
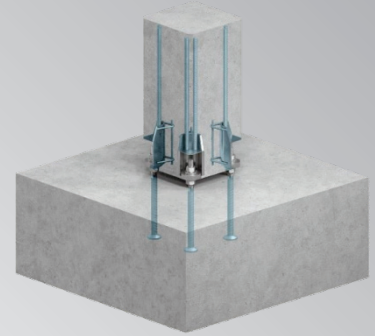


Axis and grade works of foundation manufacturing are completed in the work or project site before the assembly and if there are no problems, assembly process begins. Upon completion of assembly necessary finishes are performed and the building is delivered.

**Regbar** Concrete Pre-Casting Systems ensure a fast and economic installation of pre-casting.

## Regbar Column Shoe

Column Shoes (Column Apparatus) are fasteners that provide fast and secure connections between precast concrete columns and foundations or between precast concrete columns. It is a widely-approved product for various types of precast columns.



Product Code	RCS16	RCS20	RCS24	RCS30	RCS40
<b>A [mm]</b>	75	80	85	90	110
<b>B [mm]</b>	115	120	125	140	180
<b>C [mm]</b>	50	50	50	50	60
<b>D [mm]</b>	135	145	150	175	225
<b>E [mm]</b>	85	95	105	120	150
<b>F [mm]</b>	725	875	1105	1430	1885
<b>t [mm]</b>	15	20	30	45	50
<b>Ø [mm]</b>	28	31	35	40	55
<b>Weight [kg/pc]</b>	2.2	3.8	6.4	13.5	26.6

### HEADQUARTERS

Caferağa Mah. Albay Faik Sözdener Cad.  
No:7/23 Kadıköy - İstanbul - TURKEY  
**Phone:** +90 216 405 21 55 pbx  
**E-mail:** info@regbar.com

### PLANT

Sanayi Mah. İzmit Sanayi Sitesi  
13. Cadde 318 Blok Apt. No: 318/132  
No:9 İzmit - Kocaeli - TURKEY  
**Mobile:** +90 541 932 37 51

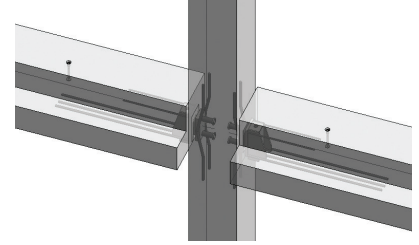
### RUSSIA BRANCH

Lesnaya Plaza 4, 4th Lesnoy  
Pereulok No: 24/8 125047  
Moscow / RUSSIA



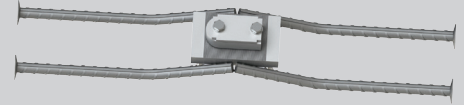
## Regbar Corbel

**Regbar Corbel** is a modular corbel where the cast part provides flat mold walls and the bolted bracket offers superior adjustability and high resistances. The Corbel system ensures reaching the maximum earth height and visually attractive beam-to-column connections in dwellings.



## Long Corbel

Long Corbel is a structural steel part used to support the precast floor elements to the beams. It is normally used in TT plates or secondary beams placed between supporting structures.



## Beam Shoe

Beam Shoes forms effective, moment-resistant bolted connections between precast concrete columns and precast concrete beams. They are used with Anchor Connectors. The wide range of products is suitable for most light and heavy load conditions.

## Precast Panel Anchors

- Fast and easy anchorage of concrete facade panels to concrete support structure
- Load groups from 5.0 to 56 kN
- Also suitable for use in panel thicknesses of 30-50 mm

## Parapet Corbels

- Economic use with 8 different profile sizes
- Suitable for different insulation thicknesses
- Stainless steel for high corrosion protection



## Wire Sandwich Panel Anchors

- Installation is simple and fast
- Officially approved, technically advanced system
- Economically applicable even for very thick insulation layers between concrete cover

## Flat Anchors

- Absorption of high loads and suitable for large unit sizes

## Wire Sandwich Panel Anchors

- Adjuster for aligning precast concrete wall elements
- Easy, damage free screwable height adjustment

Regbar Construction  
Technology



### HEADQUARTERS

Caferağa Mah. Albay Faik Sözdener Cad.  
No:7/23 Kadıköy - İstanbul - TURKEY  
**Phone:** +90 216 405 21 55 pbx  
**E-mail:** info@regbar.com

### PLANT

Sanayi Mah. İzmit Sanayi Sitesi  
13. Cadde 318 Blok Apt. No: 318/132  
No:9 İzmit - Kocaeli - TURKEY  
**Mobile:** +90 541 932 37 51

### RUSSIA BRANCH

Lesnaya Plaza 4, 4th Lesnoy  
Pereulok No: 24/8 125047  
Moscow / RUSSIA



# REGBAR

CONSTRUCTION TECHNOLOGY SOLUTIONS



[www.regbar.com](http://www.regbar.com)  
[info@regbar.com](mailto:info@regbar.com)

#### HEADQUARTERS

Caferağa Mah. Albay Faik Sözdener Cad.  
No:7/23 Kadıköy - İstanbul - TURKEY  
**Phone:** +90 216 405 21 55 pbx  
**E-mail:** [info@regbar.com](mailto:info@regbar.com)

#### PLANT

Sanayi Mah. İzmit Sanayi Sitesi  
13. Cadde 318 Blok Apt. No: 318/132  
No:9 İzmit - Kocaeli - TURKEY  
**Mobile:** +90 541 932 37 51

#### RUSSIA BRANCH

Lesnaya Plaza 4, 4th Lesnoy  
Pereulok No: 24/8 125047  
Moscow / RUSSIA