

---

## MECHANICAL REINFORCING BAR SPLICING SYSTEM

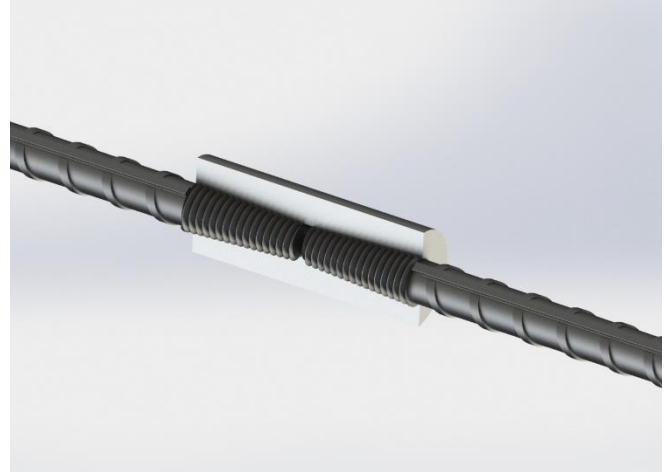
---

# taperCOUP Coupler

### PROPERTIES

---

- Meets or exceeds the requirements of major international building codes
- A wide range of international rebar grades and deformation patterns can be used
- Cross threading is eliminated with taper threaded design
- Installs easily and fast
- Slim design reduces concrete cover
- Available in sizes 12 mm - 40 mm
- Allows simple visual inspection



Tapercoup Couplers are designed to splice the same diameter bars where at least one bar can be rotated and moved freely in its axial direction. The couplers are machined to have taper threads inside which create a mechanical connection of two corresponding reinforcing steel.

Typical applications include splicing of the column bars (or shearwalls), splicing of the beam bars, future extensions and segmental pours of concrete.

Tapercoup couplers are designed to meet or exceed major international building codes and Department of Transportation requirements, including:

|  |            |                                      |                               |
|--|------------|--------------------------------------|-------------------------------|
| AASHTO                                   | ACI 349    | IBC Type 1<br>(125% Specified Yield) | NF A 35-020-1                 |
| ABNT NBR 8548:1984                       | ACI 359    | IBC Type 2<br>(Specified Ultimate)   | NF EN 1992-1-1                |
| ACI 318 Type 1<br>(125% Specified Yield) | AS3600     | ISO 15835                            | Turkish Seismic Code<br>2018  |
| ACI 318 Type 2<br>(Specified Ultimate)   | Eurocode 2 | NEN EN 1992-1-1                      | US Army Corps of<br>Engineers |

### SIMPLE INSTALLATION

---

#### HEADQUARTERS

Caferağa Mah. Albay Faik Sözdener Cad.  
No:7/23 Kadıköy- İstanbul / TURKEY  
Phone : +90 216 405 21 55 / PBX  
info@regbar.com

#### PLANT

Sanayi Mah. İzmit Sanayi Sitesi  
13. Cadde 318 Blok Apt. No:318/132  
No:9 İzmit-Kocaeli / TURKEY  
Mobile: +90 541 932 3751

#### RUSSIA BRANCH:

Lesnaya Plaza 4, 4th, Lesnoy Pereulok  
No:24/8125047 Moscow / RUSSIA  
W: +7 (495) 641 37 64



1. Remove the protecting cap from the rebar.



2. Screw the coupler on the threaded bar.



3. Align the corresponding two rebar. Rotate the rebar to the middle of coupler. Lock the splice using a wrench.

| Product Code | Bar Sizes   |     |        | Outside Diameter (*) |         | Length |         | Unit Weight (*) |      | Torque Values |         |
|--------------|-------------|-----|--------|----------------------|---------|--------|---------|-----------------|------|---------------|---------|
|              | Metric [mm] | US  | Canada | [mm]                 | ["]     | [mm]   | ["]     | [kg]            | [lb] | [Nm]          | [ft-lb] |
| TPCP12       | 12          | #4  | 10M    | 17                   | 43/64   | 50     | 1-31/32 | 0.05            | 0.12 | 40            | 30      |
| TPCP14       | 14          | -   | -      | 22                   | 55/64   | 56     | 2-13/64 | 0.11            | 0.25 | 80            | 60      |
| TPCP16       | 16          | #5  | 15M    | 22                   | 55/64   | 61     | 2-13/32 | 0.10            | 0.23 | 120           | 90      |
| TPCP18       | 18          | -   | -      | 27                   | 1-1/16  | 72     | 2-53/64 | 0.2             | 0.45 | 150           | 110     |
| TPCP20       | 20          | #6  | 20M    | 27                   | 1-1/16  | 87     | 3-27/64 | 0.21            | 0.47 | 180           | 130     |
| TPCP22       | 22          | #7  | -      | 30                   | 1-3/16  | 91     | 3-37/64 | 0.27            | 0.6  | 220           | 160     |
| TPCP26       | 26          | #8  | 25M    | 35                   | 1-3/8   | 97     | 3-13/16 | 0.38            | 0.84 | 270           | 200     |
| TPCP28       | 28          | #9  | 30M    | 40                   | 1-37/64 | 101    | 3-15/16 | 0.57            | 1.26 | 270           | 200     |
| TPCP30       | 30          | -   | -      | 40                   | 1-37/64 | 121    | 4-49/64 | 0.60            | 1.33 | 300           | 200     |
| TPCP32       | 32          | #10 | -      | 45                   | 1-49/64 | 108    | 4-1/4   | 0.75            | 1.66 | 300           | 200     |
| TPCP36       | 36          | #11 | 35M    | 50                   | 1-31/32 | 121    | 4-49/64 | 1.01            | 2.23 | 300           | 200     |
| TPCP40       | 40          | -   | -      | 55                   | 2-11/64 | 131    | 5-5/32  | 1.30            | 2.87 | 350           | 200     |

(\*) Bar diameters and weights may vary by country.

#### NOTES

- Dimensions shown in chart are typical.
- Locking the splices using a wrench is a must. Torque values are shown in the table above.
- It is recommended to store away the thread protecting caps for reuse.
- Refer to the complete product installation instructions before starting the installation.

Regbar Construction  
Reinforcing Bar  
Splicing System  
<http://tiny.cc/regbar>



#### HEADQUARTERS

Caferağa Mah. Albay Faik Sözdener Cad.  
No:7/23 Kadıköy- İstanbul / TURKEY  
Phone : +90 216 405 21 55 / PBX  
info@regbar.com

#### PLANT

Sanayi Mah. İzmit Sanayi Sitesi  
13. Cadde 318 Blok Apt. No:318/132  
No:9 İzmit-Kocaeli / TURKEY  
Mobile: +90 541 932 3751

#### RUSSIA BRANCH:

Lesnaya Plaza 4, 4th, Lesnoy Pereulok  
No:24/8125047 Moscow / RUSSIA  
W: +7 (495) 641 37 64