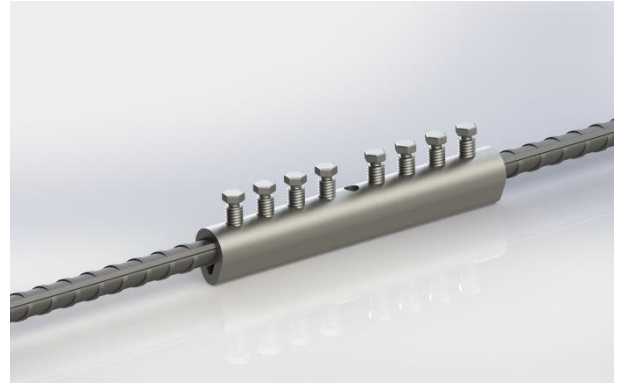


## MECHANICAL REINFORCING BAR SPLICING SYSTEM

# sosCOUP Coupler

### PROPERTIES

- Meets or exceeds the requirements of major international building codes
- A wide range of international rebar grades and deformation patterns can be used
- Installs easily and fast
- Requires no bar-end threading, sawing or swaging
- Available in sizes 12 mm - 40 mm
- Allows simple visual inspection



Soscoup couplers allow easy and simple field installation since there is no need to prepare, saw or swing bar-end. The couplers can be mounted with a standard wrench or impact wrench depending on the size of the coupler. The bolt heads will shear off when the correct installation tightness is achieved, allowing visual inspection. Typical applications include repair, bent bar, retrofit, precast closure pour and new construction.

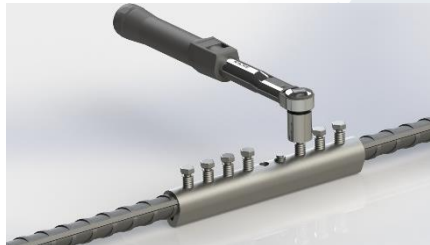
Soscoup couplers are designed to meet or exceed major international building codes including:

AASHTO	ACI 349	IBC Type 1 (125% Specified Yield)	NF A 35-020-1
ACI 318 Type 1 (125% Specified Yield)	ACI 359	Eurocode 2	Turkish Seismic Code 2018

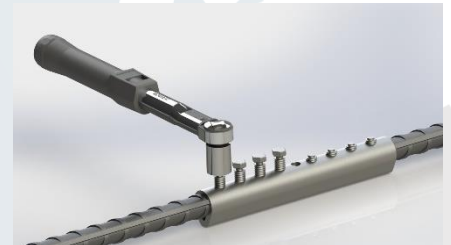
### SIMPLE INSTALLATION



1. Place the rebar in the coupler until the center stop pin is in contact.



2. Strengthen bolts from the inside to the outside to secure on bar 1.



3. Repeat steps 1 and 2 on the other side of the coupler with bar 2.

#### HEADQUARTERS

Caferağa Mah. Albay Faik Sözdener Cad.  
No:7/23 Kadıköy- İstanbul / TURKEY  
Phone : +90 216 405 21 55 / PBX  
info@regbar.com

#### PLANT

Sanayi Mah. İzmit Sanayi Sitesi  
13. Cadde 318 Blok Apt. No:318/132  
No:9 İzmit-Kocaeli / TURKEY  
Mobile: +90 541 932 3751

#### RUSSIA BRANCH:

Lesnaya Plaza 4, 4th, Lesnoy Pereulok  
No:24/8125047 Moscow / RUSSIA  
W: +7 (495) 641 37 64

**PRODUCT SPECIFICATIONS**

Product Code	Metric [mm]	Bar Sizes		Outside Diameter (*)		Length		Unit Weight (*)	
		US	Canada	[mm]	["]	[mm]	["]	[kg]	[lb]
SOSCP12	12	#4	10M	29	1-9/64	99	3-57/64	0.40	0.89
SOSCP14	14	-	-	35	1-3/8	109	4-19/64	0.60	1.33
SOSCP16	16	#5	15M	35	1-3/8	109	4-19/64	0.60	1.33
SOSCP18	18	-	-	44	1-47/64	153	6-1/32	1.30	2.87
SOSCP20	20	#6	20M	44	1-47/64	153	6-1/32	1.30	2.87
SOSCP22	22	#7	-	48	1-57/64	173	6-13/16	1.80	3.97
SOSCP26	26	#8	25M	54	2-1/8	173	6-13/16	2.30	5.08
SOSCP28	28	#9	30M	60	2-23/64	173	6-13/16	2.80	6.18
SOSCP30	30	-	-	60	2-23/64	173	6-13/16	2.80	6.18
SOSCP32	32	#10	-	65	2-9/16	220	8-21/32	4.00	8.82
SOSCP36	36	#11	35M	72	2-53/64	286	11-17/64	6.20	13.67
SOSCP40	40	-	-	80	3-5/32	400	15-3/4	11.60	25.58

**BOLT SPECIFICATIONS**

Coupler Product Code	Metric [mm]	Bar Sizes		Socket Size		Average Bolt Torque		Number of Bolts
		US	Canada	[mm]	["]	[N-m]	[ft-lb]	
SOSCP12	12	#4	10M	13	1/2	205	150	4
SOSCP14	14	-	-	13	1/2	205	150	4
SOSCP16	16	#5	15M	13	1/2	205	150	4
SOSCP18	18	-	-	13	1/2	205	150	6
SOSCP20	20	#6	20M	13	1/2	205	150	6
SOSCP22	22	#7	-	16	5/8	340	250	6
SOSCP26	26	#8	25M	16	5/8	475	350	6
SOSCP28	28	#9	30M	16	5/8	475	350	6
SOSCP30	30	-	-	16	5/8	475	350	6
SOSCP32	32	#10	-	21	13/16	750	550	10
SOSCP36	36	#11	35M	21	13/16	750	550	12
SOSCP40	40	-	-	21	13/16	820	600	12

(\*) Bar diameters and weights may vary by country.

**NOTES**

- Dimensions shown in chart are typical. The length of the bolt can vary after the heads of the bolt are sheared off.
- Check the air pressure, torque rating and air flow requirements before starting the installation with the air impact wrench.
- It is recommended to use an impact wrench rated 2x the bolt torque.

**HEADQUARTERS**

Caferağa Mah. Albay Fak Sözdener Cad.  
 No:7/23 Kadıköy- İstanbul / TURKEY  
 Phone : +90 216 405 21 55 / PBX  
 info@regbar.com

**PLANT**

Sanayi Mah. İzmit Sanayi Sitesi  
 13. Cadde 318 Blok Apt. No:318/132  
 No:9 İzmit-Kocaeli / TURKEY  
 Mobile: +90 541 932 3751

**RUSSIA BRANCH:**

Lesnaya Plaza 4, 4th, Lesnoy Pereulok  
 No:24/8125047 Moscow / RUSSIA  
 W: +7 (495) 641 37 64

- When the appropriate bolt torque is achieved, bolt heads need not be removed.



**HEADQUARTERS**

Caferağa Mah. Albay Faik Sözdener Cad.  
No:7/23 Kadıkoy- Istanbul / TURKEY  
Phone : +90 216 405 21 55 / PBX  
info@regbar.com

**PLANT**

Sanayi Mah. İzmit Sanayi Sitesi  
13. Cadde 318 Blok Apt. No:318/132  
No:9 İzmit-Kocaeli / TURKEY  
Mobile: +90 541 932 3751

**RUSSIA BRANCH:**

Lesnaya Plaza 4, 4th, Lesnoy Pereulok  
No:24/8125047 Moscow / RUSSIA  
W: +7 (495) 641 37 64